

Product datasheet for **TA385287**

SMN1 Mouse Monoclonal Antibody [Clone ID: 2F1-D9-F1]

Product data:

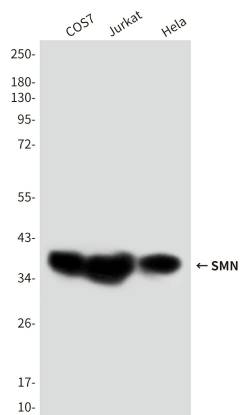
Product Type:	Primary Antibodies
Clone Name:	2F1-D9-F1
Applications:	FC, IHC, IP, WB
Recommended Dilution:	WB: 1/500-1/2000 IHC: 1/200-1/1000 FC: 1/200-1/400
Reactivity:	Human, Monkey
Host:	Mouse
Isotype:	IgG1
Clonality:	Monoclonal
Immunogen:	Purified recombinant fragment of human SMN1 expressed in E. Coli.
Formulation:	Liquid in PBS containing 50% glycerol, 0.5% BSA and 0.03% Proclin 300, pH 7.3.
Concentration:	lot specific
Purification:	Ascitic Fluid
Conjugation:	Unconjugated
Storage:	Store at 4°C short term. Aliquot and store at -20°C long term. Avoid freeze/thaw cycles.
Stability:	1 year
Predicted Protein Size:	39kDa
Gene Name:	survival of motor neuron 1, telomeric
Database Link:	Entrez Gene 6606 Human Q16637
Background:	Swiss-Prot Acc.Q16637.This gene is part of a 500 kb inverted duplication on chromosome 5q13. This duplicated region contains at least four genes and repetitive elements which make it prone to rearrangements and deletions. The repetitiveness and complexity of the sequence have also caused difficulty in determining the organization of this genomic region. The telomeric and centromeric copies of this gene are nearly identical and encode the same protein.



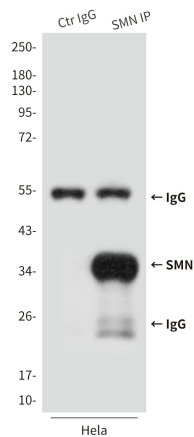
[View online »](#)

Synonyms: BCD541; Gemin-1; SMA; SMA1; SMA2; SMA3; SMA4; SMA@; SMN; SMNC; SMNT; T-BCD541

Product images:



Western blot analysis of Gemin 1 in COS7, Jurkat and HeLa lysates using Gemin 1 antibody.



Immunoprecipitation analysis of SMN (2F1) in HeLa lysates using Gemin 1 antibody.