

Product datasheet for **TA385286**

SMC1 (SMC1A) Rabbit Polyclonal Antibody

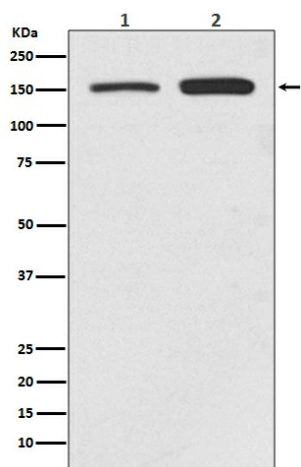
Product data:

Product Type:	Primary Antibodies
Applications:	IF, IHC, WB
Recommended Dilution:	WB: 1/1000-1/2000 IHC: 1/50-1/200 ICC/IF: 1/50-1/200
Reactivity:	Human, Mouse, Rat
Host:	Rabbit
Isotype:	IgG
Clonality:	Polyclonal
Immunogen:	A synthesized peptide derived from human SMC1
Formulation:	Rabbit IgG in phosphate buffered saline , pH 7.4, 150mM NaCl, 0.02% sodium azide and 50% glycerol.
Concentration:	lot specific
Purification:	Affinity Chromatography
Conjugation:	Unconjugated
Storage:	Store at 4°C short term. Aliquot and store at -20°C long term. Avoid freeze/thaw cycles.
Stability:	1 year
Predicted Protein Size:	143kDa
Gene Name:	structural maintenance of chromosomes 1A
Database Link:	Entrez Gene 8243 Human Q14683
Background:	Swiss-Prot Acc.Q14683.Structural maintenance of chromosomes 1 (SMC1) protein is a chromosomal protein member of the cohesin complex that enables sister chromatid cohesion and plays a role in DNA repair. ATM/NBS1-dependent phosphorylation of SMC1 occurs at Ser957 and Ser966 in response to ionizing radiation (IR) as part of the intra-S-phase DNA damage checkpoint.
Synonyms:	CDLS2; DKFZp686L19178; DXS423E; KIAA0178; MGC138332; SB1.8; SMC1; SMC1alpha; SMC1L1; SMCB



[View online »](#)

Product images:



Western blot analysis of SMC1 in (1) HeLa lysates; (2) Jurkat lysates using SMC1A antibody.