

Product datasheet for **TA385282**

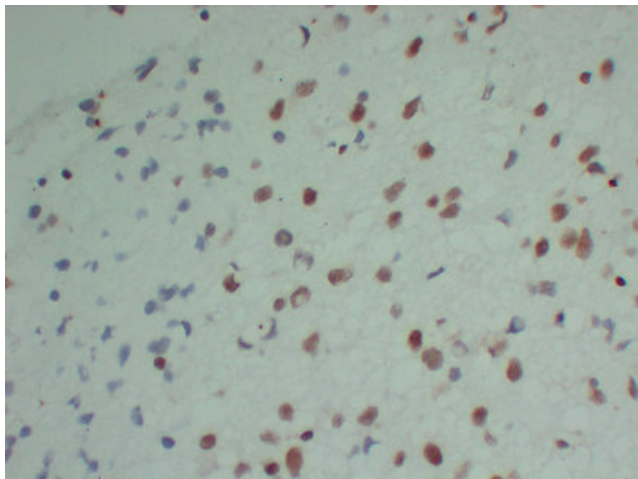
SNF5 (SMARCB1) Mouse Monoclonal Antibody [Clone ID: 5F1-6F6-3A1]

Product data:

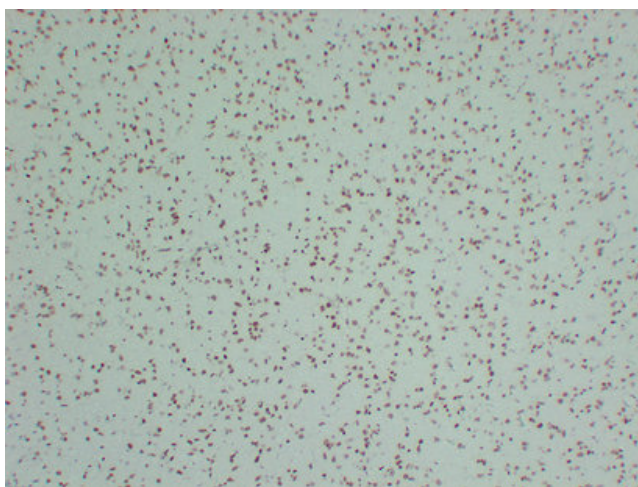
Product Type:	Primary Antibodies
Clone Name:	5F1-6F6-3A1
Applications:	IHC, WB
Recommended Dilution:	IHC-p: 1/100-1/500 WB: 1/500-1/2000
Reactivity:	Human
Host:	Mouse
Isotype:	IgG
Clonality:	Monoclonal
Immunogen:	Synthesized peptide derived from human INI-1
Formulation:	Liquid in PBS containing 50% glycerol, 0.5% BSA and 0.02% sodium azide, pH 7.3.
Concentration:	lot specific
Purification:	Affinity Chromatography
Conjugation:	Unconjugated
Storage:	Store at 4°C short term. Aliquot and store at -20°C long term. Avoid freeze/thaw cycles.
Stability:	1 year
Predicted Protein Size:	Observed MW (kDa): 44
Gene Name:	SWI/SNF related, matrix associated, actin dependent regulator of chromatin, subfamily b, member 1
Database Link:	Entrez Gene 6598 Human Q12824
Background:	Swiss-Prot Acc.Q12824.
Synonyms:	BAF47; hSNF5; hSNFS; Ini1; RDT; Sfh1p; SNF5; SNF5L1; Snr1



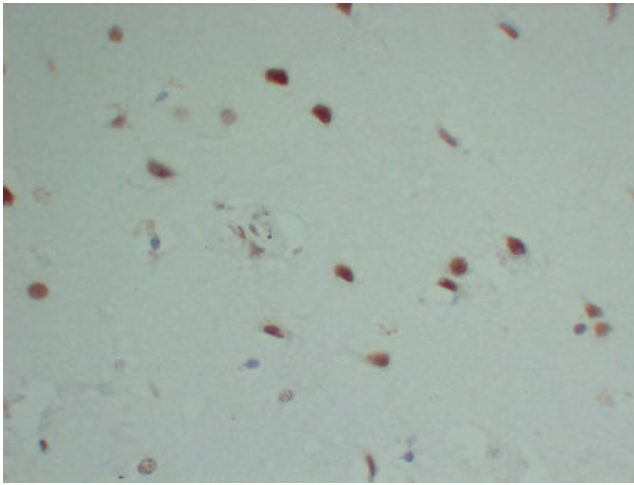
[View online »](#)

Product images:

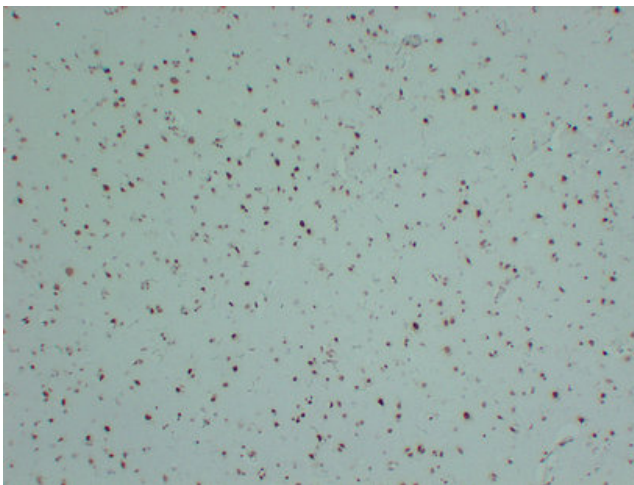
Immunohistochemical analysis of paraffin-embedded Astrocytoma-high magnification. 1, Antibody was diluted at 1:200(4°,overnight). 2, Citrate buffer of pH6.0 was used for antigen retrieval. 3,Secondary antibody was diluted at 1:200(room temperature, 30min).



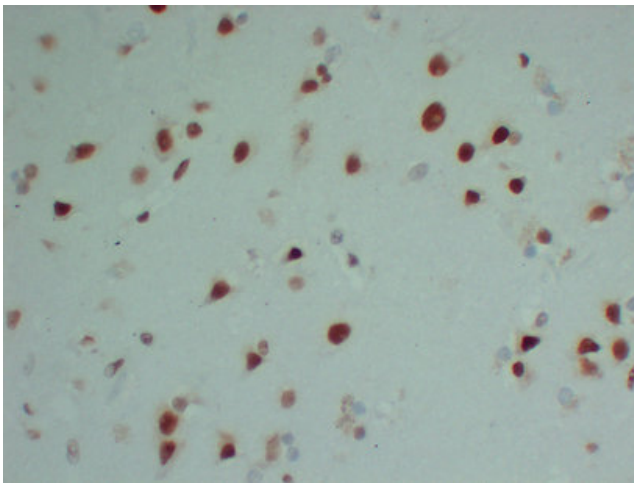
Immunohistochemical analysis of paraffin-embedded Astrocytoma. 1, Antibody was diluted at 1:200(4°,overnight). 2, Citrate buffer of pH6.0 was used for antigen retrieval. 3,Secondary antibody was diluted at 1:200(room temperature, 30min).



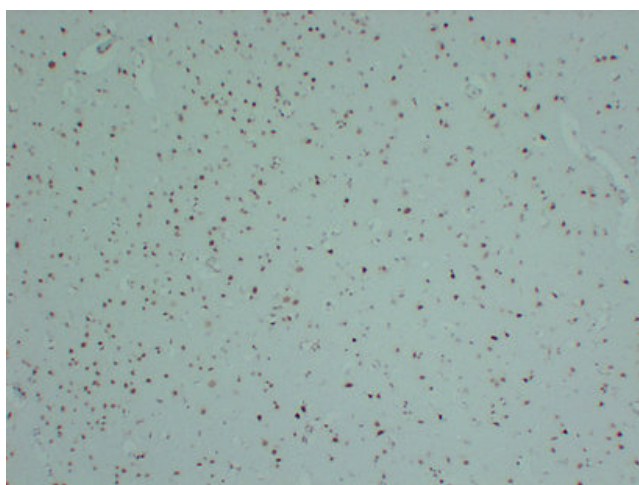
Immunohistochemical analysis of paraffin-embedded Brain-high magnification. 1, Antibody was diluted at 1:200(4°,overnight). 2, Citrate buffer of pH6. was used for antigen retrieval. 3,Secondary antibody was diluted at 1:200(room temperature, 30min).



Immunohistochemical analysis of paraffin-embedded Brain. 1, Antibody was diluted at 1:200(4°,overnight). 2, Citrate buffer of pH6.0 was used for antigen retrieval. 3,Secondary antibody was diluted at 1:200(room temperature, 30min).



Immunohistochemical analysis of paraffin-embedded Brain-high magnification. 1, Antibody was diluted at 1:200(4°,overnight). 2, Citrate buffer of pH6.0 was used for antigen retrieval. 3,Secondary antibody was diluted at 1:200(room temperature, 30min).



Immunohistochemical analysis of paraffin-embedded Brain. 1, Antibody was diluted at 1:200(4°, overnight). 2, Citrate buffer of pH6.0 was used for antigen retrieval. 3, Secondary antibody was diluted at 1:200(room temperature, 30min).