

Product datasheet for **TA385280**

SNF2H (SMARCA5) Rabbit Polyclonal Antibody

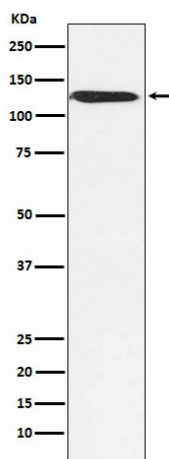
Product data:

Product Type:	Primary Antibodies
Applications:	IF, WB
Recommended Dilution:	WB: 1/500-1/2000 ICC/IF: 1/50-1/200
Reactivity:	Human, Mouse, Rat
Host:	Rabbit
Isotype:	IgG
Clonality:	Polyclonal
Immunogen:	A synthesized peptide derived from human SNF2H
Formulation:	Rabbit IgG in phosphate buffered saline , pH 7.4, 150mM NaCl, 0.02% sodium azide and 50% glycerol.
Concentration:	lot specific
Purification:	Affinity Chromatography
Conjugation:	Unconjugated
Storage:	Store at 4°C short term. Aliquot and store at -20°C long term. Avoid freeze/thaw cycles.
Stability:	1 year
Predicted Protein Size:	122kDa
Gene Name:	SWI/SNF related, matrix associated, actin dependent regulator of chromatin, subfamily a, member 5
Database Link:	Entrez Gene 8467 Human O60264
Background:	Swiss-Prot Acc.O60264.Helicase that possesses intrinsic ATP-dependent nucleosome-remodeling activity. Complexes containing SMARCA5 are capable of forming ordered nucleosome arrays on chromatin; this may require intact histone H4 tails.
Synonyms:	hISWI; hSNF2H; ISWI; SNF2H; WCRF135



[View online »](#)

Product images:



Western blot analysis of SNF2H in MCF-7 lysates using SMARCA5 antibody.