

## Product datasheet for **TA385279S**

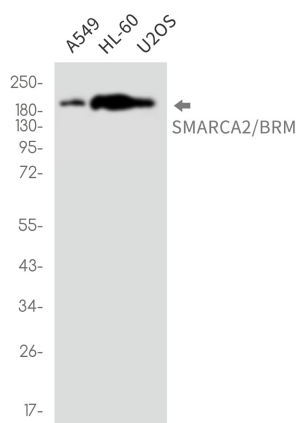
### SMARCA2 Rabbit Monoclonal Antibody [Clone ID: R02-3E2]

#### Product data:

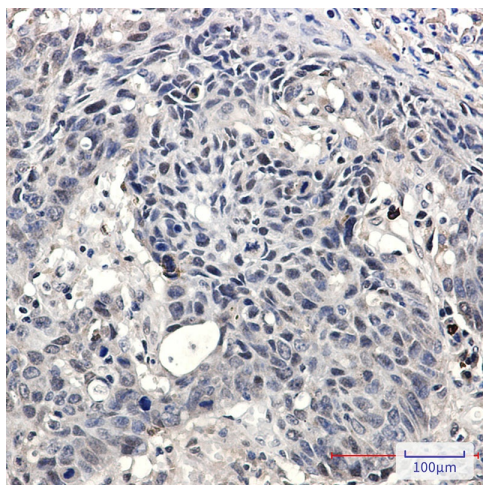
Product Type:	Primary Antibodies
Clone Name:	R02-3E2
Applications:	IF, IHC, WB
Recommended Dilution:	WB: 1/1000 IHC: 1/200 ICC/IF: 1/20
Reactivity:	Human
Host:	Rabbit
Isotype:	IgG
Clonality:	Monoclonal
Immunogen:	A synthetic peptide of human SMARCA2/BRM
Formulation:	50mM Tris-Glycine(pH 7.4), 0.15M NaCl, 40% Glycerol, 0.01% Sodium azide and 0.05% BSA
Concentration:	lot specific
Purification:	Affinity Purified
Conjugation:	Unconjugated
Storage:	Store at 4°C short term. Aliquot and store at -20°C long term. Avoid freeze/thaw cycles.
Stability:	1 year
Predicted Protein Size:	Calculated MW:181 kDa,Observed MW:190 kDa
Gene Name:	SWI/SNF related, matrix associated, actin dependent regulator of chromatin, subfamily a, member 2
Database Link:	<a href="#">Entrez Gene 6595 Human P51531</a>
Synonyms:	BAF190; BRM; FLJ36757; hBRM; hSNF2a; MGC74511; OTTHUMP00000020970; OTTHUMP00000020971; SNF2; SNF2-alpha; SNF2A; SNF2L2; SNF2LA; Sth1p; SWI2



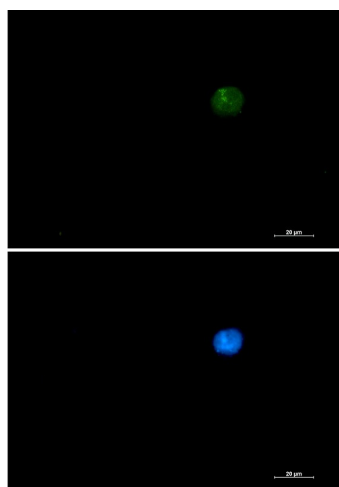
[View online »](#)

**Product images:**

Western blot analysis of SMARCA2/BRM in A549, HL-60, U2OS lysates using SMARCA2/BRM antibody.



Immunohistochemistry analysis of paraffin-embedded Human lung cancer tissue using SMARCA2/BRM antibody. High-pressure and temperature Sodium Citrate pH 6.0 was used for antigen retrieval.



Immunocytochemistry analysis of SMARCA2 (green) in 293 using SMARCA2 antibody, and DAPI(blue).