

## Product datasheet for **TA385278**

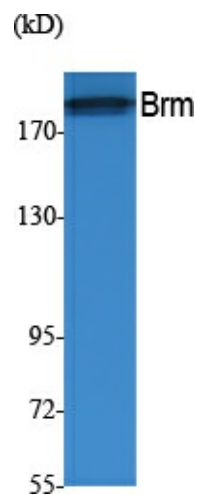
### SMARCA2 Rabbit Polyclonal Antibody

#### Product data:

Product Type:	Primary Antibodies
Applications:	ELISA, WB
Recommended Dilution:	WB: 1/500-1/2000 ELISA: 1/20000
Reactivity:	Human, Mouse, Rat
Host:	Rabbit
Isotype:	IgG
Clonality:	Polyclonal
Immunogen:	The antiserum was produced against synthesized peptide derived from human Brm. AA range:1328-1377
Formulation:	Liquid in PBS containing 50% glycerol, 0.5% BSA and 0.02% sodium azide, pH 7.3.
Concentration:	lot specific
Purification:	Affinity Purified
Conjugation:	Unconjugated
Storage:	Store at 4°C short term. Aliquot and store at -20°C long term. Avoid freeze/thaw cycles.
Stability:	1 year
Predicted Protein Size:	Observed MW (kDa):181
Gene Name:	SWI/SNF related, matrix associated, actin dependent regulator of chromatin, subfamily a, member 2
Database Link:	<a href="#">Entrez Gene 6595 Human P51531</a>
Background:	Swiss-Prot Acc.P51531.
Synonyms:	BAF190; BRM; FLJ36757; hBRM; hSNF2a; MGC74511; OTTHUMP00000020970; OTTHUMP00000020971; SNF2; SNF2-alpha; SNF2A; SNF2L2; SNF2LA; Sth1p; SWI2



[View online »](#)

**Product images:**

Western blot analysis of BRM in A549 lysates using Brm antibody.