

Product datasheet for **TA385277S**

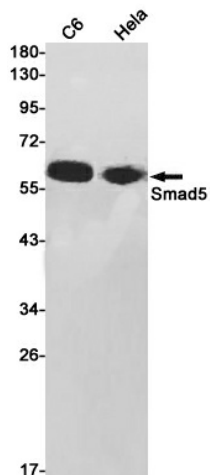
SMAD5 Rabbit Monoclonal Antibody [Clone ID: R07-2A5]

Product data:

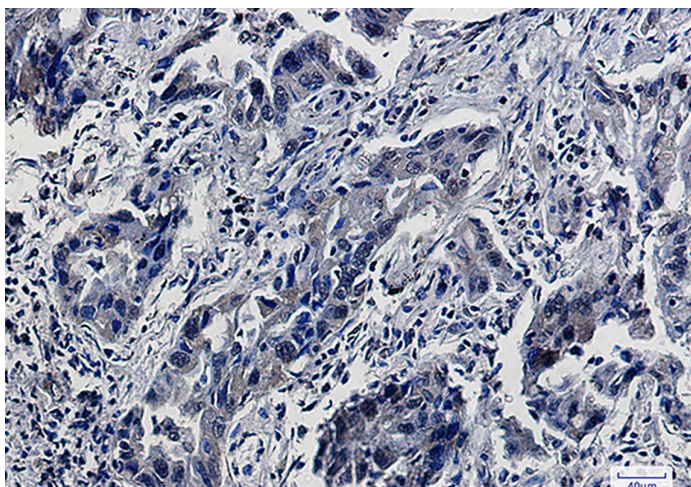
Product Type:	Primary Antibodies
Clone Name:	R07-2A5
Applications:	IF, IHC, WB
Recommended Dilution:	WB: 1/1000 IHC: 1/20 ICC/IF: 1/20
Reactivity:	Human, Rat
Host:	Rabbit
Isotype:	IgG
Clonality:	Monoclonal
Immunogen:	A synthetic peptide of human SMAD5
Formulation:	50mM Tris-Glycine(pH 7.4), 0.15M NaCl, 40% Glycerol, 0.01% Sodium azide and 0.05% BSA
Concentration:	lot specific
Purification:	Affinity Purified
Conjugation:	Unconjugated
Storage:	Store at 4°C short term. Aliquot and store at -20°C long term. Avoid freeze/thaw cycles.
Stability:	1 year
Predicted Protein Size:	Calculated MW: 52 kDa; Observed MW: 60 kDa
Gene Name:	SMAD family member 5
Database Link:	Entrez Gene 4090 Human Q99717
Background:	Swiss-Prot Acc.Q99717.Transcriptional modulator activated by BMP (bone morphogenetic proteins) type 1 receptor kinase. SMAD5 is a receptor-regulated SMAD (R-SMAD).SitesFeature keyPosition(s)Description
Synonyms:	DKFZp781C1895; DKFZp781O1323; Dwfc; hSmad5; JV5-1; MADH5



[View online »](#)

Product images:

Western blot analysis of Smad5 in C6, HeLa lysates using Smad5 antibody.



Immunohistochemistry analysis of paraffin-embedded Human lung cancer using SMAD5 antibody. High-pressure and temperature Sodium Citrate pH 6.0 was used for antigen retrieval.