

Product datasheet for **TA385276**

SMAD5 Rabbit Polyclonal Antibody

Product data:

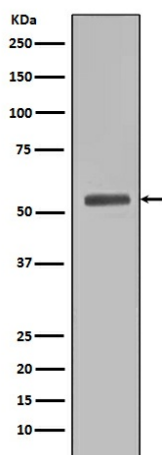
Product Type:	Primary Antibodies
Applications:	FC, IF, IHC, WB
Recommended Dilution:	WB: 1/500-1/2000 IHC: 1/50-1/200 ICC/IF: 1/50-1/200 FC: 1/50
Reactivity:	Human, Rat
Host:	Rabbit
Isotype:	IgG
Clonality:	Polyclonal
Immunogen:	A synthesized peptide derived from human Smad5
Formulation:	Rabbit IgG in phosphate buffered saline , pH 7.4, 150mM NaCl, 0.02% sodium azide and 50% glycerol.
Concentration:	lot specific
Purification:	Affinity Chromatography
Conjugation:	Unconjugated
Storage:	Store at 4°C short term. Aliquot and store at -20°C long term. Avoid freeze/thaw cycles.
Stability:	1 year
Predicted Protein Size:	52kDa
Gene Name:	SMAD family member 5
Database Link:	Entrez Gene 4090 Human Q99717
Background:	Swiss-Prot Acc.Q99717.Transcriptional modulator activated by BMP (bone morphogenetic proteins) type 1 receptor kinase. SMAD5 is a receptor-regulated SMAD (R-SMAD). SMAD5 is required for normal development of the cardiovascular system in vivo; lack of the SMAD5 gene results in apoptosis of cardiac myocytes. 3 Upregulation of SMAD5 has been reported to mediate apoptosis of gastric epithelial cells induced by Helicobacter pylori infection. Tissue specificity: Ubiquitous.



[View online »](#)

Synonyms: DKFZp781C1895; DKFZp781O1323; Dwfc; hSmad5; JV5-1; MADH5

Product images:



Western blot analysis of Smad5 in HEK293 lysates using Smad5 antibody.