

## Product datasheet for **TA385275**

### SMAD2 Mouse Polyclonal Antibody

#### Product data:

Product Type:	Primary Antibodies
Applications:	IHC, WB
Recommended Dilution:	WB: 1/1000
Reactivity:	Human, Rat, Mouse
Host:	Mouse
Isotype:	IgG
Clonality:	Polyclonal
Immunogen:	Recombinant Protein of Smad3
Formulation:	Liquid in PBS containing 50% glycerol, 0.5% BSA and 0.03% Proclin 300, pH 7.3.
Concentration:	lot specific
Purification:	Affinity Purified
Conjugation:	Unconjugated
Storage:	Store at 4°C short term. Aliquot and store at -20°C long term. Avoid freeze/thaw cycles.
Stability:	1 year
Predicted Protein Size:	Observed MW(kDa):52/60
Gene Name:	SMAD family member 2
Database Link:	<a href="#">Entrez Gene 4087 Human P84022</a>

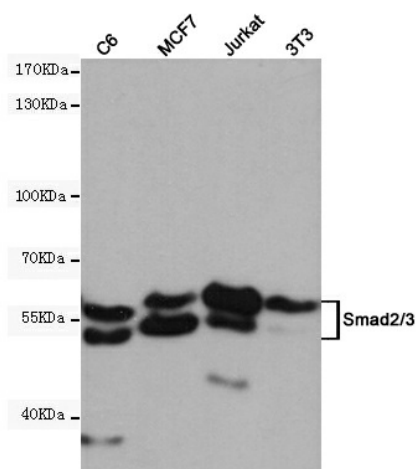
**Background:** Swiss-Prot Acc.P84022. Members of the Smad family of signal transduction molecules are components of a critical intracellular pathway that transmit TGF- $\beta$  signals from the cell surface into the nucleus. Three distinct classes of Smads have been defined: the receptor-regulated Smads (R-Smads), which include Smad1, 2, 3, 5, and 8; the common-mediator Smad (co-Smad), Smad4; and the antagonistic or inhibitory Smads (I-Smads), Smad6 and 7. Activated type I receptors associate with specific R-Smads and phosphorylate them on a conserved carboxy terminal SSXS motif. The phosphorylated R-Smad dissociates from the receptor and forms a heteromeric complex with the co-Smad (Smad4), allowing translocation of the complex to the nucleus. Once in the nucleus, Smads can target a variety of DNA binding proteins to regulate transcriptional responses.



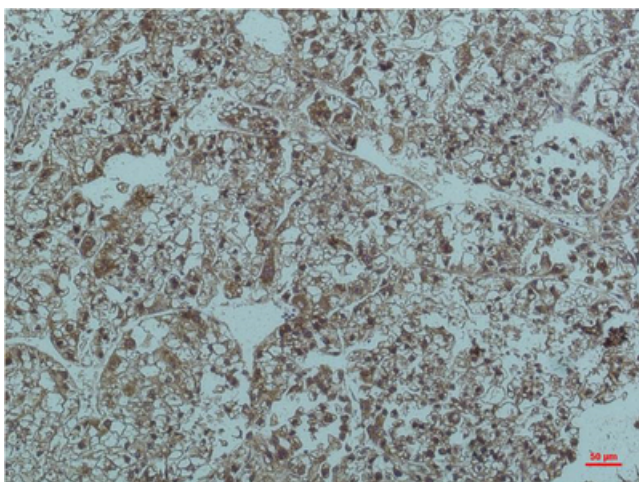
[View online »](#)

Synonyms: hMAD-2; hSMAD2; JV18; JV18-1; MADH2; MADR2; MGC22139; MGC34440

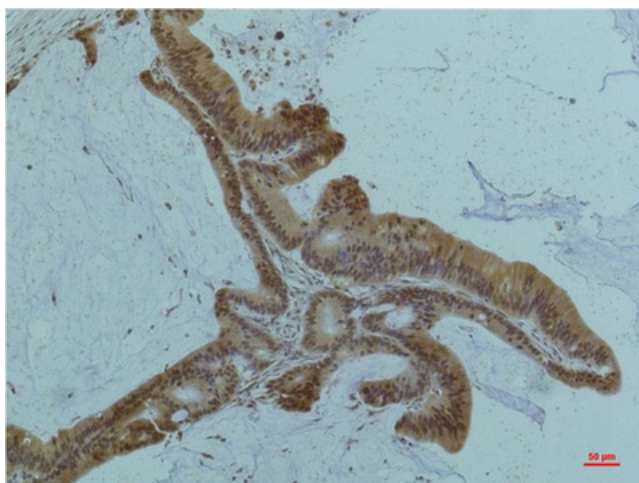
### Product images:



Western blot analysis of extracts from C6, MCF7, Jurkat and 3T3 cell lysates using Smad2/3 mouse mAb (1:500 diluted). Predicted band size: 52/6 kDa. Observed band size: 52/6 kDa.



Immunohistochemistry analysis of paraffin-embedded Human Liver tissue using Smad2/3 (6F7) antibody. High-pressure and temperature Sodium Citrate pH 6.0 was used for antigen retrieval.



Immunohistochemical analysis of paraffin-embedded Human Colon Carcinoma using Smad2/3 Mouse mAb diluted at 1:200.