

## Product datasheet for **TA385273M**

### **SMAD3 Rabbit Monoclonal Antibody [Clone ID: R09-6A2]**

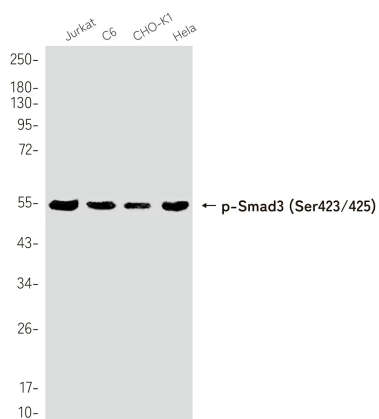
#### **Product data:**

Product Type:	Primary Antibodies
Clone Name:	R09-6A2
Applications:	WB
Recommended Dilution:	WB: 1/1000
Reactivity:	Human, Rat, Hamster
Host:	Rabbit
Isotype:	IgG
Clonality:	Monoclonal
Immunogen:	A synthetic phosphopeptide corresponding to residues surrounding Ser423/Ser425 of human Smad3 (Phosphorylated)
Formulation:	50mM Tris-Glycine(pH 7.4), 0.15M NaCl, 40% Glycerol, 0.01% Sodium azide and 0.05% BSA
Concentration:	lot specific
Purification:	Affinity Purified
Conjugation:	Unconjugated
Storage:	Store at 4°C short term. Aliquot and store at -20°C long term. Avoid freeze/thaw cycles.
Stability:	1 year
Predicted Protein Size:	Calculated MW: 48 kDa; Observed MW: 52 kDa
Gene Name:	SMAD family member 3
Database Link:	<a href="#">Entrez Gene 4088 Human P84022</a>
Background:	Swiss-Prot Acc.P84022.
Synonyms:	DKFZp586N0721; DKFZp686J10186; hMAD-3; hSMAD3; HSPC193; HsT17436; JV15-2; Mad3; MADH3; MGC60396



[View online »](#)

## Product images:



Western blot analysis of Phospho-Smad3 (Ser423/425) in Jurkat, C6, CHO-K1, HeLa lysates using Phospho-Smad3 (Ser423/425) antibody.