

Product datasheet for **TA385272S**

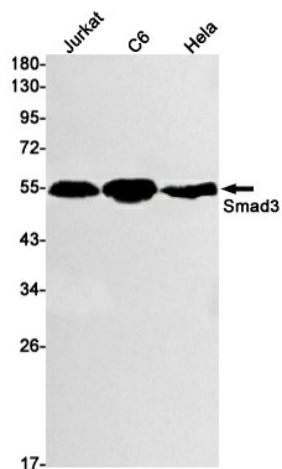
SMAD3 Rabbit Monoclonal Antibody [Clone ID: R09-7H4]

Product data:

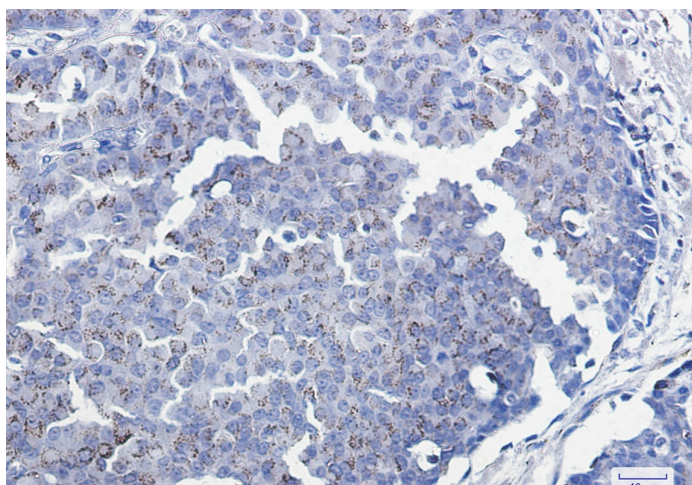
Product Type:	Primary Antibodies
Clone Name:	R09-7H4
Applications:	IF, IHC, WB
Recommended Dilution:	WB: 1/2000 IHC: 1/20-1/500 ICC/IF: 1/50
Reactivity:	Human, Rat
Host:	Rabbit
Isotype:	IgG
Clonality:	Monoclonal
Immunogen:	A synthetic peptide of human Smad3
Formulation:	50mM Tris-Glycine(pH 7.4), 0.15M NaCl, 40% Glycerol, 0.01% Sodium azide and 0.05% BSA
Concentration:	lot specific
Purification:	Affinity Purified
Conjugation:	Unconjugated
Storage:	Store at 4°C short term. Aliquot and store at -20°C long term. Avoid freeze/thaw cycles.
Stability:	1 year
Predicted Protein Size:	Calculated MW: 48 kDa; Observed MW: 52 kDa
Gene Name:	SMAD family member 3
Database Link:	Entrez Gene 4088 Human P84022
Background:	Swiss-Prot Acc.P84022.
Synonyms:	DKFZp586N0721; DKFZp686J10186; hMAD-3; hSMAD3; HSPC193; HsT17436; JV15-2; Mad3; MADH3; MGC60396



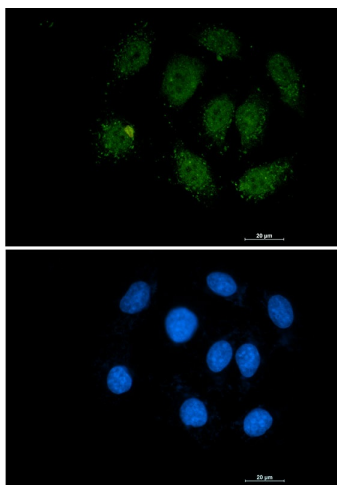
[View online »](#)

Product images:

Western blot analysis of Smad3 in Jurkat, C6, HeLa lysates using Smad3 antibody.



Immunohistochemistry analysis of paraffin-embedded Human breast cancer tissue using Smad3 antibody. High-pressure and temperature Sodium Citrate pH 6.0 was used for antigen retrieval.



Immunocytochemistry analysis of Smad3 (green) in A549 using Smad3 antibody, and DAPI (blue).