

Product datasheet for **TA385271**

SMAD3 Rabbit Polyclonal Antibody

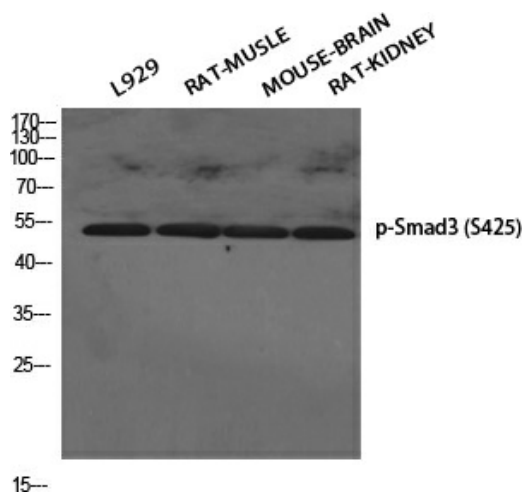
Product data:

| | |
|-------------------------|--|
| Product Type: | Primary Antibodies |
| Applications: | ELISA, IF, IHC, WB |
| Recommended Dilution: | IF: 1/50-200 WB: 1/500-1/2000 IHC: 1/100-1/300 ELISA: 1/40000 |
| Reactivity: | Human, Mouse, Rat |
| Host: | Rabbit |
| Isotype: | IgG |
| Clonality: | Polyclonal |
| Immunogen: | The antiserum was produced against synthesized peptide derived from human Smad3 around the phosphorylation site of Ser425. AA range:376-425 (Phosphorylated) |
| Formulation: | Liquid in PBS containing 50% glycerol, 0.5% BSA and 0.02% sodium azide, pH 7.3. |
| Concentration: | lot specific |
| Purification: | Affinity Purified |
| Conjugation: | Unconjugated |
| Storage: | Store at 4°C short term. Aliquot and store at -20°C long term. Avoid freeze/thaw cycles. |
| Stability: | 1 year |
| Predicted Protein Size: | Observed MW (kDa):58 |
| Gene Name: | SMAD family member 3 |
| Database Link: | Entrez Gene 4088 Human P84022 |
| Background: | Swiss-Prot Acc.P84022. |
| Synonyms: | DKFZp586N0721; DKFZp686J10186; hMAD-3; hSMAD3; HSPC193; HsT17436; JV15-2; Mad3; MADH3; MGC60396 |



[View online »](#)

Product images:



Western blot analysis of Phospho-Smad3 (Ser425) in various lysates using Phospho-Smad3 (Ser425) antibody.