

Product datasheet for **TA385267M**

SMAD2 Rabbit Polyclonal Antibody

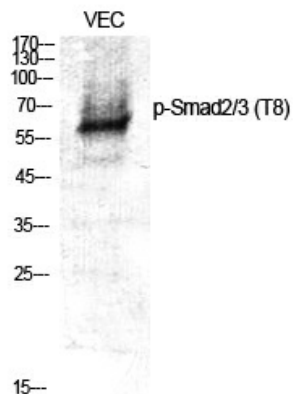
Product data:

Product Type:	Primary Antibodies
Applications:	ELISA, WB
Recommended Dilution:	WB: 1/500-1/2000 ELISA: 1/10000
Reactivity:	Human, Mouse, Rat
Host:	Rabbit
Isotype:	IgG
Clonality:	Polyclonal
Immunogen:	The antiserum was produced against synthesized peptide derived from human Smad2/3 around the phosphorylation site of Thr8. AA range:1-50 (Phosphorylated)
Formulation:	Liquid in PBS containing 50% glycerol, 0.5% BSA and 0.02% sodium azide, pH 7.3.
Concentration:	lot specific
Purification:	Affinity Purified
Conjugation:	Unconjugated
Storage:	Store at 4°C short term. Aliquot and store at -20°C long term. Avoid freeze/thaw cycles.
Stability:	1 year
Predicted Protein Size:	Observed MW (kDa):48
Gene Name:	SMAD family member 2
Database Link:	Entrez Gene 4087 Human Q15796
Background:	Swiss-Prot Acc.Q15796/P84022.
Synonyms:	hMAD-2; hSMAD2; JV18; JV18-1; MADH2; MADR2; MGC22139; MGC34440

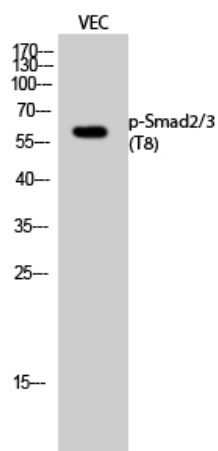


[View online »](#)

Product images:



Western blot analysis of Phospho-Smad2/3 (Thr8) in various lysates using Phospho-Smad2/3 (Thr8) antibody.



Western blot analysis of Phospho-Smad2/3 (Thr8) in VEC lysates using Phospho-Smad2/3 (Thr8) antibody.