

## Product datasheet for **TA385266M**

### SMAD2 Rabbit Monoclonal Antibody [Clone ID: R03-3F8]

#### Product data:

Product Type:	Primary Antibodies
Clone Name:	R03-3F8
Applications:	IF, IHC, IP, WB
Recommended Dilution:	WB: 1/1000-1/5000 IHC: 1/20 ICC/IF: 1/20-1/100 IP: 1/20
Reactivity:	Human, Rat, Hamster
Host:	Rabbit
Isotype:	IgG
Clonality:	Monoclonal
Immunogen:	A synthetic peptide of human Smad2
Formulation:	50mM Tris-Glycine(pH 7.4), 0.15M NaCl, 40% Glycerol, 0.01% Sodium azide and 0.05% BSA
Concentration:	lot specific
Purification:	Affinity Purified
Conjugation:	Unconjugated
Storage:	Store at 4°C short term. Aliquot and store at -20°C long term. Avoid freeze/thaw cycles.
Stability:	1 year
Predicted Protein Size:	Calculated MW: 52 kDa; Observed MW: 52 kDa
Gene Name:	SMAD family member 2
Database Link:	<a href="#">Entrez Gene 4087 Human Q15796</a>

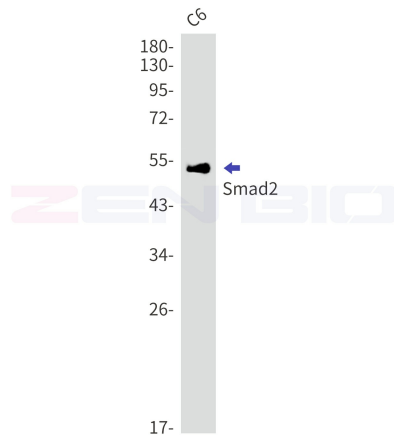

[View online »](#)

**Background:**

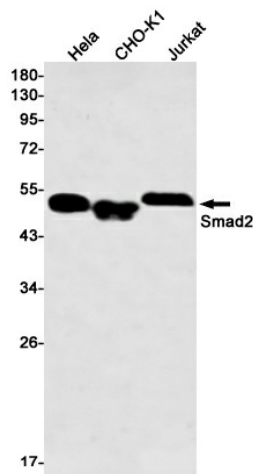
Swiss-Prot Acc.Q15796.Receptor-regulated SMAD (R-SMAD) that is an intracellular signal transducer and transcriptional modulator activated by TGF-beta (transforming growth factor) and activin type 1 receptor kinases. Binds the TRE element in the promoter region of many genes that are regulated by TGF-beta and, on formation of the SMAD2/SMAD4 complex, activates transcription. May act as a tumor suppressor in colorectal carcinoma. Positively regulates PDPK1 kinase activity by stimulating its dissociation from the 14-3-3 protein YWHAQ which acts as a negative regulator.

**Synonyms:**

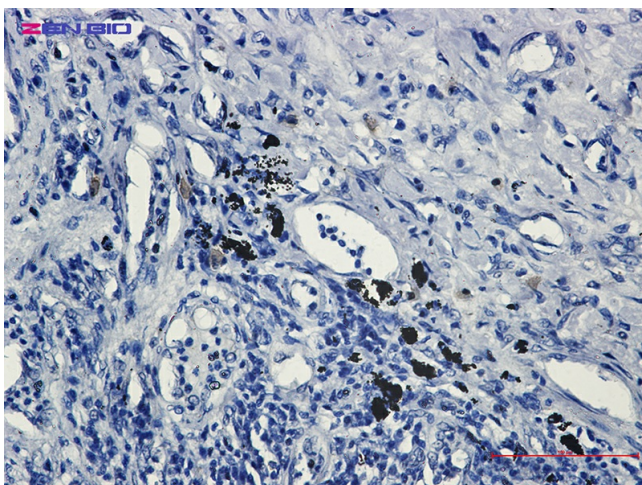
hMAD-2; hSMAD2; JV18; JV18-1; MADH2; MADR2; MGC22139; MGC34440

**Product images:**


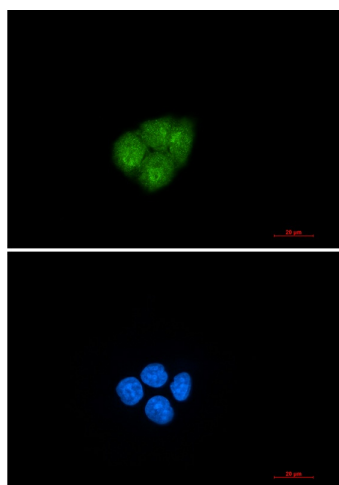
Western blot detection of Smad2 in C6 lysates using Smad2 antibody. Predicted band size: 52kDa. Observed band size: 52kDa.



Western blot detection of Smad2 in HeLa, CHO-K1, Jurkat cell lysates using Smad2 Rabbit mAb (1:500 diluted). Predicted band size: 52kDa. Observed band size: 52kDa.



Immunohistochemistry of Smad2 in paraffin-embedded Human lung cancer tissue using Smad2 Rabbit mAb at dilution 1/50



Immunocytochemistry analysis of Smad2 (green) in Hela using Smad2 antibody, and DAPI (blue).