

Product datasheet for **TA385265S**

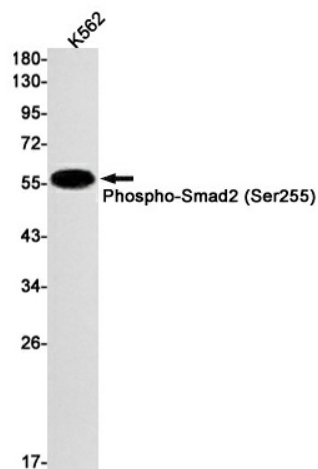
SMAD2 Rabbit Monoclonal Antibody [Clone ID: R02-8F2]

Product data:

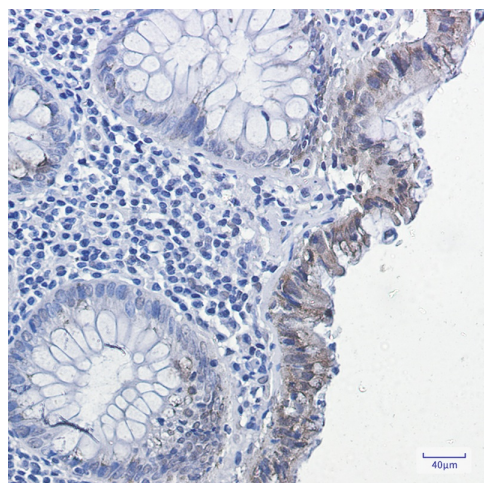
Product Type:	Primary Antibodies
Clone Name:	R02-8F2
Applications:	IHC, IP, WB
Recommended Dilution:	WB: 1/1000 IHC: 1/20 IP: 1/20
Reactivity:	Human
Host:	Rabbit
Isotype:	IgG
Clonality:	Monoclonal
Immunogen:	A synthetic phosphopeptide corresponding to residues surrounding Ser255 of human Smad2 (Phosphorylated)
Formulation:	50mM Tris-Glycine(pH 7.4), 0.15M NaCl, 40% Glycerol, 0.01% Sodium azide and 0.05% BSA
Concentration:	lot specific
Purification:	Affinity Purified
Conjugation:	Unconjugated
Storage:	Store at 4°C short term. Aliquot and store at -20°C long term. Avoid freeze/thaw cycles.
Stability:	1 year
Predicted Protein Size:	Calculated MW: 52 kDa; Observed MW: 60 kDa
Gene Name:	SMAD family member 2
Database Link:	Entrez Gene 4087 Human Q15796
Background:	Swiss-Prot Acc.Q15796.
Synonyms:	hMAD-2; hSMAD2; JV18; JV18-1; MADH2; MADR2; MGC22139; MGC34440



[View online »](#)

Product images:

Western blot analysis of Phospho-Smad2 (Ser255) in K562 lysates using Phospho-Smad2 (Ser255) antibody.



Immunohistochemistry analysis of paraffin-embedded Human colon cancer using Phospho-Smad2 (Ser255) antibody. High-pressure and temperature Sodium Citrate pH 6.0 was used for antigen retrieval.