

Product datasheet for **TA385265M**

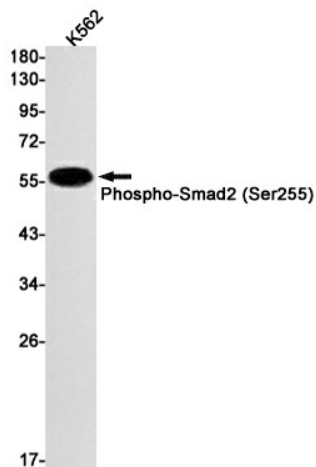
SMAD2 Rabbit Monoclonal Antibody [Clone ID: R02-8F2]

Product data:

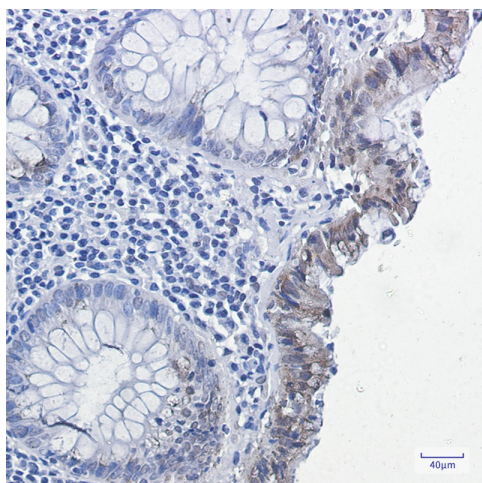
| | |
|-------------------------|---|
| Product Type: | Primary Antibodies |
| Clone Name: | R02-8F2 |
| Applications: | IHC, IP, WB |
| Recommended Dilution: | WB: 1/1000 IHC: 1/20 IP: 1/20 |
| Reactivity: | Human |
| Host: | Rabbit |
| Isotype: | IgG |
| Clonality: | Monoclonal |
| Immunogen: | A synthetic phosphopeptide corresponding to residues surrounding Ser255 of human Smad2 (Phosphorylated) |
| Formulation: | 50mM Tris-Glycine(pH 7.4), 0.15M NaCl, 40% Glycerol, 0.01% Sodium azide and 0.05% BSA |
| Concentration: | lot specific |
| Purification: | Affinity Purified |
| Conjugation: | Unconjugated |
| Storage: | Store at 4°C short term. Aliquot and store at -20°C long term. Avoid freeze/thaw cycles. |
| Stability: | 1 year |
| Predicted Protein Size: | Calculated MW: 52 kDa; Observed MW: 60 kDa |
| Gene Name: | SMAD family member 2 |
| Database Link: | Entrez Gene 4087 Human Q15796 |
| Background: | Swiss-Prot Acc.Q15796. |
| Synonyms: | hMAD-2; hSMAD2; JV18; JV18-1; MADH2; MADR2; MGC22139; MGC34440 |


[View online »](#)

Product images:



Western blot analysis of Phospho-Smad2 (Ser255) in K562 lysates using Phospho-Smad2 (Ser255) antibody.



Immunohistochemistry analysis of paraffin-embedded Human colon cancer using Phospho-Smad2 (Ser255) antibody. High-pressure and temperature Sodium Citrate pH 6.0 was used for antigen retrieval.