

## Product datasheet for **TA385264M**

### SMAD2 Rabbit Polyclonal Antibody

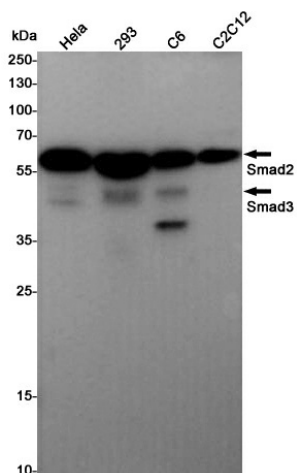
#### Product data:

Product Type:	Primary Antibodies
Applications:	ChIP, FC, IF, IP, WB
Recommended Dilution:	WB: 1/1000 ICC/IF: 1/50 FC: 1/100 IP: 1/20 ChIP: 1/20
Reactivity:	Human, Mouse, Rat
Host:	Rabbit
Isotype:	IgG
Clonality:	Polyclonal
Immunogen:	Recombinant protein of human Smad2
Formulation:	50mM Tris-Glycine(pH 7.4), 0.15M NaCl, 40% Glycerol, 0.01% Sodium azide and 0.05% BSA
Concentration:	lot specific
Purification:	Affinity Purified
Conjugation:	Unconjugated
Storage:	Store at 4°C short term. Aliquot and store at -20°C long term. Avoid freeze/thaw cycles.
Stability:	1 year
Predicted Protein Size:	Calculated MW: 52,48 kDa; Observed MW: 52,60 kDa
Gene Name:	SMAD family member 2
Database Link:	<a href="#">Entrez Gene 4087 Human Q15796</a>
Background:	Swiss-Prot Acc.Q15796.
Synonyms:	hMAD-2; hSMAD2; JV18; JV18-1; MADH2; MADR2; MGC22139; MGC34440

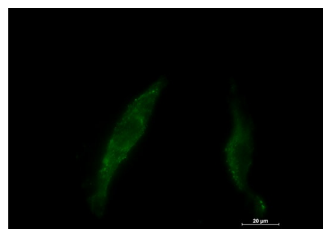


[View online »](#)

## Product images:



Western blot analysis of Smad2/3 in HeLa, 293, C6, C2C12 lysates using Smad2/3 antibody.



Immunocytochemistry analysis of Smad2/3 (green) in HT-1080 using Smad2/3 antibody, and DAPI (blue).