

## Product datasheet for **TA385261M**

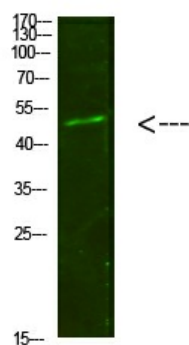
### SMAD1 Rabbit Polyclonal Antibody

#### Product data:

Product Type:	Primary Antibodies
Applications:	ELISA, WB
Recommended Dilution:	WB: 1/500-2000
Reactivity:	Human, Mouse, Rat
Host:	Rabbit
Isotype:	IgG
Clonality:	Polyclonal
Immunogen:	Synthesized peptide derived from human Smad1/5/9. at AA range: 291-340
Formulation:	Liquid in PBS containing 50% glycerol, 0.5% BSA and 0.02% sodium azide, pH 7.3.
Concentration:	lot specific
Purification:	Affinity Purified
Conjugation:	Unconjugated
Storage:	Store at 4°C short term. Aliquot and store at -20°C long term. Avoid freeze/thaw cycles.
Stability:	1 year
Predicted Protein Size:	Observed MW (kDa):52
Gene Name:	SMAD family member 1
Database Link:	<a href="#">Entrez Gene 4086 Human Q15797</a>
Synonyms:	BSP-1; BSP1; CMT2D; GARS; HMN5; hSMAD1; JV4-1; JV41; MADH1; MADR1



[View online »](#)

**Product images:**


Western blot analysis of Smad1/5/9 in 293T lysates using Smad1/5/9 antibody.