

Product datasheet for **TA385259M**

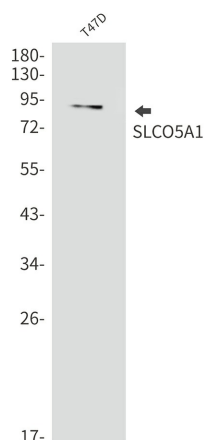
SLCO5A1 Rabbit Monoclonal Antibody [Clone ID: R02-5J4]

Product data:

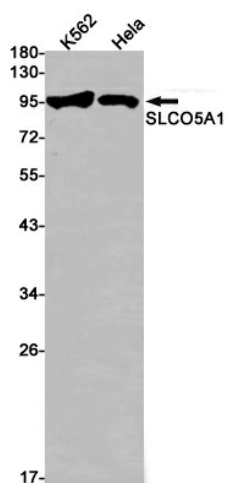
Product Type:	Primary Antibodies
Clone Name:	R02-5J4
Applications:	IHC, WB
Recommended Dilution:	WB: 1/1000 IHC: 1/20
Reactivity:	Human, Mouse
Host:	Rabbit
Isotype:	IgG
Clonality:	Monoclonal
Immunogen:	Recombinant protein of human SLCO5A1
Formulation:	50mM Tris-Glycine(pH 7.4), 0.15M NaCl, 40% Glycerol, 0.01% Sodium azide and 0.05% BSA
Concentration:	lot specific
Purification:	Affinity Purified
Conjugation:	Unconjugated
Storage:	Store at 4°C short term. Aliquot and store at -20°C long term. Avoid freeze/thaw cycles.
Stability:	1 year
Predicted Protein Size:	Calculated MW: 92 kDa; Observed MW: 92 kDa
Gene Name:	solute carrier organic anion transporter family member 5A1
Database Link:	Entrez Gene 81796 Human Q9H2Y9
Background:	Swiss-Prot Acc.Q9H2Y9.Solute carrier organic anion transporter family member 5A1
Synonyms:	FLJ39560; OATP-J; OATP-RP4; OATP5A1; OATPRP4; SLC21A15

[View online »](#)

Product images:



Western blot analysis of SLCO5A1 in T47D lysates using SLCO5A1 antibody.



Western blot analysis of SLCO5A1 in K562, HeLa lysates using SLCO5A1 antibody.