

## Product datasheet for **TA385257M**

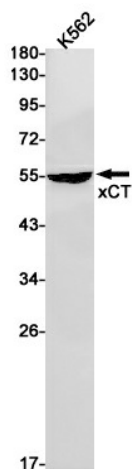
### **SLC7A11 Rabbit Monoclonal Antibody [Clone ID: R08-2C5]**

#### **Product data:**

Product Type:	Primary Antibodies
Clone Name:	R08-2C5
Applications:	IP, WB
Recommended Dilution:	WB: 1/1000-1/5000 IP: 1/20
Reactivity:	Human, Mouse
Host:	Rabbit
Isotype:	IgG
Clonality:	Monoclonal
Immunogen:	A synthetic peptide of human xCT
Formulation:	50mM Tris-Glycine(pH 7.4), 0.15M NaCl, 40% Glycerol, 0.01% Sodium azide and 0.05% BSA
Concentration:	lot specific
Purification:	Affinity Purified
Conjugation:	Unconjugated
Storage:	Store at 4°C short term. Aliquot and store at -20°C long term. Avoid freeze/thaw cycles.
Stability:	1 year
Predicted Protein Size:	Calculated MW: 55 kDa; Observed MW: 55 kDa
Database Link:	<a href="#">Q9UPY5</a>
Background:	Swiss-Prot Acc.Q9UPY5.Sodium-independent, high-affinity exchange of anionic amino acids with high specificity for anionic form of cystine and glutamate.

[View online »](#)

## Product images:



Western blot analysis of xCT in K562 lysates using xCT antibody.