

Product datasheet for **TA385257**

SLC7A11 Rabbit Monoclonal Antibody [Clone ID: R08-2C5]

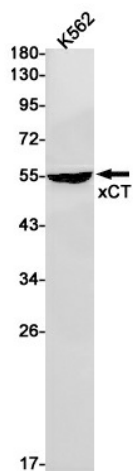
Product data:

| | |
|-------------------------|--|
| Product Type: | Primary Antibodies |
| Clone Name: | R08-2C5 |
| Applications: | IP, WB |
| Recommended Dilution: | WB: 1/1000-1/5000 IP: 1/20 |
| Reactivity: | Human, Mouse |
| Host: | Rabbit |
| Isotype: | IgG |
| Clonality: | Monoclonal |
| Immunogen: | A synthetic peptide of human xCT |
| Formulation: | 50mM Tris-Glycine(pH 7.4), 0.15M NaCl, 40% Glycerol, 0.01% Sodium azide and 0.05% BSA |
| Concentration: | lot specific |
| Purification: | Affinity Purified |
| Conjugation: | Unconjugated |
| Storage: | Store at 4°C short term. Aliquot and store at -20°C long term. Avoid freeze/thaw cycles. |
| Stability: | 1 year |
| Predicted Protein Size: | Calculated MW: 55 kDa; Observed MW: 55 kDa |
| Database Link: | Q9UPY5 |
| Background: | Swiss-Prot Acc.Q9UPY5.Sodium-independent, high-affinity exchange of anionic amino acids with high specificity for anionic form of cystine and glutamate. |



[View online »](#)

Product images:



Western blot analysis of xCT in K562 lysates using xCT antibody.