

Product datasheet for **TA385255**

SLC5A1 Rabbit Polyclonal Antibody

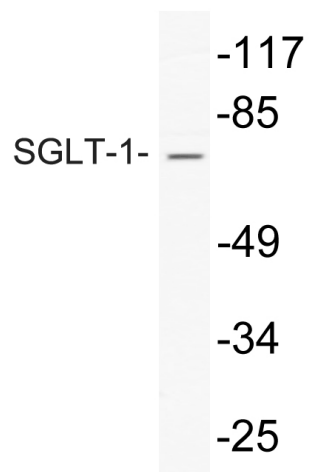
Product data:

Product Type:	Primary Antibodies
Applications:	ELISA, WB
Recommended Dilution:	WB: 1/500-1/2000 ELISA: 1/10000
Reactivity:	Human, Mouse, Rat
Host:	Rabbit
Isotype:	IgG
Clonality:	Polyclonal
Immunogen:	The antiserum was produced against synthesized peptide derived from human SGLT-1. AA range:525-574
Formulation:	Liquid in PBS containing 50% glycerol, 0.5% BSA and 0.02% sodium azide, pH 7.3.
Concentration:	lot specific
Purification:	Affinity Chromatography
Conjugation:	Unconjugated
Storage:	Store at 4°C short term. Aliquot and store at -20°C long term. Avoid freeze/thaw cycles.
Stability:	1 year
Predicted Protein Size:	Observed MW (kDa):75
Database Link:	P13866
Background:	Swiss-Prot Acc.P13866.Actively transports glucose into cells by Na ⁺ cotransport with a Na ⁺ to glucose coupling ratio of 2:1. Efficient substrate transport in mammalian kidney is provided by the concerted action of a low affinity high capacity and a high affinity low capacity Na ⁺ /glucose cotransporter arranged in series along kidney proximal tubules.SitesFeature keyPosition(s)Description



[View online »](#)

Product images:



Western blot analysis of SGLT1 in HepG2 lysates using SGLT1 antibody.