

Product datasheet for **TA385254M**

GLUT4 (SLC2A4) Rabbit Polyclonal Antibody

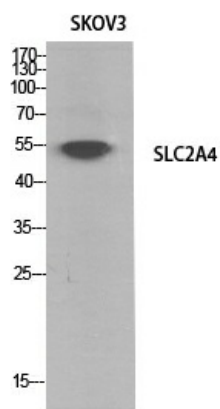
Product data:

Product Type:	Primary Antibodies
Applications:	ELISA, IHC, WB
Recommended Dilution:	WB: 1/500-2000 IHC: 1/50-300
Reactivity:	Human, Mouse, Rat
Host:	Rabbit
Isotype:	IgG
Clonality:	Polyclonal
Immunogen:	The antiserum was produced against synthesized peptide derived from the N-terminal region of human SLC2A4. AA range:21-70
Formulation:	Liquid in PBS containing 50% glycerol, 0.5% BSA and 0.02% sodium azide, pH 7.3.
Concentration:	lot specific
Purification:	Affinity Purified
Conjugation:	Unconjugated
Storage:	Store at 4°C short term. Aliquot and store at -20°C long term. Avoid freeze/thaw cycles.
Stability:	1 year
Predicted Protein Size:	Observed MW (kDa):56
Gene Name:	solute carrier family 2 member 4
Database Link:	Entrez Gene 6517 Human P14672
Background:	Swiss-Prot Acc.P14672.
Synonyms:	GLUT-4; GLUT4



[View online »](#)

Product images:



Western blot analysis of Glucose Transporter GLUT4 in SKOV-3 lysates using Glucose Transporter GLUT4 antibody.