

Product datasheet for **TA385252**

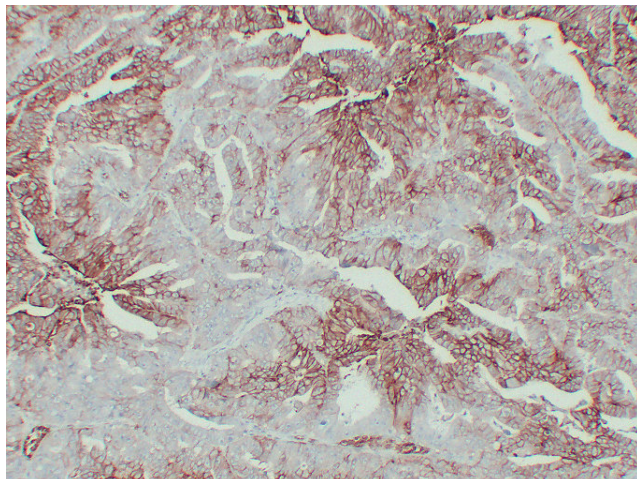
Glucose Transporter GLUT1 (SLC2A1) Mouse Monoclonal Antibody [Clone ID: 1G5-8F2-7D10]

Product data:

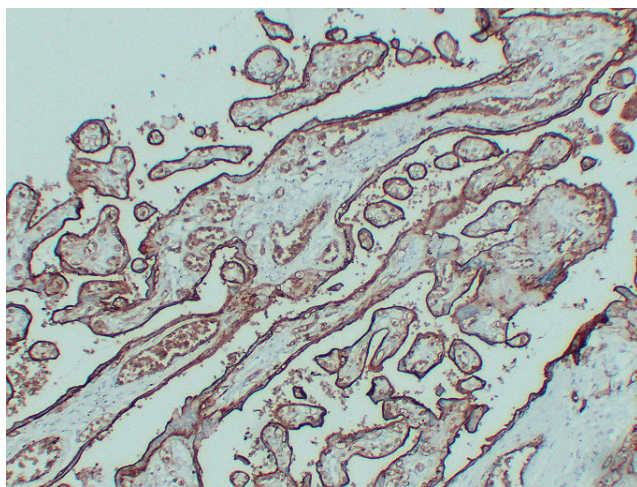
Product Type:	Primary Antibodies
Clone Name:	1G5-8F2-7D10
Applications:	IHC
Recommended Dilution:	IHC-p: 1/100-1/500
Reactivity:	Human
Host:	Mouse
Isotype:	IgG3, kappa
Clonality:	Monoclonal
Immunogen:	Synthesized peptide derived from human GLUT-1
Formulation:	Liquid in PBS containing 50% glycerol, 0.5% BSA and 0.02% sodium azide, pH 7.3.
Concentration:	lot specific
Purification:	Affinity Chromatography
Conjugation:	Unconjugated
Storage:	Store at 4°C short term. Aliquot and store at -20°C long term. Avoid freeze/thaw cycles.
Stability:	1 year
Gene Name:	solute carrier family 2 member 1
Database Link:	Entrez Gene 6513 Human P11166
Background:	Swiss-Prot Acc.P11166.
Synonyms:	DYT17; DYT18; GLUT; GLUT-1; GLUT1; MGC141895; MGC141896; PED



[View online »](#)

Product images:

Immunohistochemical analysis of paraffin-embedded human Colon carcinoma. 1, GLUT-1 Antibody was diluted at 1:200 (4°, overnight). 2, EDTA pH 8.0 was used for antigen retrieval



Immunohistochemical analysis of paraffin-embedded human Placenta. 1, GLUT-1 Antibody was diluted at 1:200 (4°, overnight). 2, EDTA pH 8.0 was used for antigen retrieval