

## Product datasheet for **TA385251**

### ENT2 (SLC29A2) Rabbit Monoclonal Antibody [Clone ID: R03-2K6]

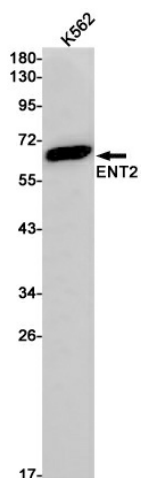
#### Product data:

Product Type:	Primary Antibodies
Clone Name:	R03-2K6
Applications:	IF, IHC, WB
Recommended Dilution:	WB: 1/1000 IHC: 1/50 ICC/IF: 1/50
Reactivity:	Human
Host:	Rabbit
Isotype:	IgG
Clonality:	Monoclonal
Immunogen:	A synthetic peptide of human ENT2
Formulation:	50mM Tris-Glycine(pH 7.4), 0.15M NaCl, 40% Glycerol, 0.01% Sodium azide and 0.05% BSA
Concentration:	lot specific
Purification:	Affinity Purified
Conjugation:	Unconjugated
Storage:	Store at 4°C short term. Aliquot and store at -20°C long term. Avoid freeze/thaw cycles.
Stability:	1 year
Predicted Protein Size:	Calculated MW: 50 kDa; Observed MW: 60 kDa
Gene Name:	solute carrier family 29 member 2
Database Link:	<a href="#">Entrez Gene 3177 Human Q14542</a>
Background:	Swiss-Prot Acc.Q14542.Mediates equilibrative transport of purine, pyrimidine nucleosides and the purine base hypoxanthine. Very less sensitive than SLC29A1 to inhibition by nitrobenzylthioinosine (NBMPR), dipyridamole, dilazep and draflazine.
Synonyms:	DER12; ENT2; HNP36

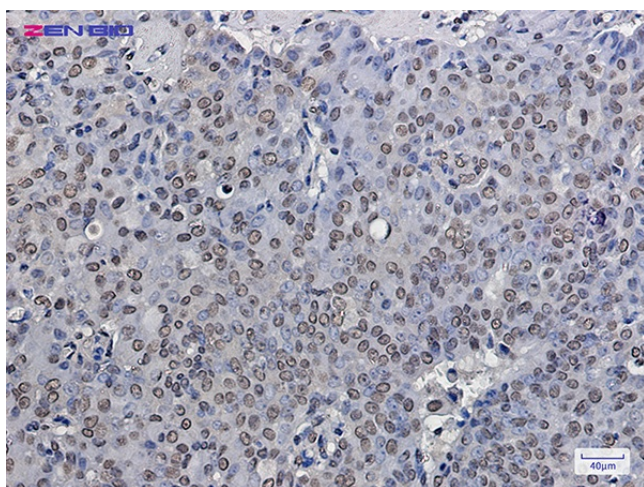


[View online »](#)

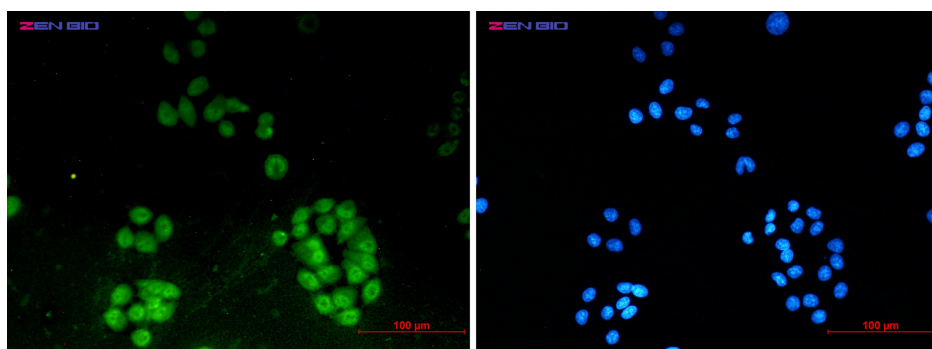
## Product images:



Western blot analysis of ENT2 in K562 lysates using ENT2 antibody.



Immunohistochemistry of ENT2 in paraffin-embedded Human breast cancer tissue using ENT2 Rabbit mAb at dilution 1/50



Immunocytochemistry of ENT2 (green) in HeLa using ENT2 antibody at dilution 1/2, and DAPI(blue)