

## Product datasheet for **TA385249**

### Monocarboxylic acid transporter 1 (SLC16A1) Rabbit Polyclonal Antibody

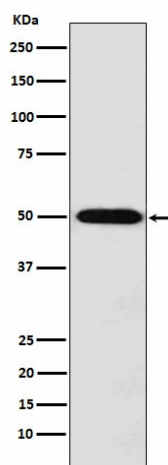
#### Product data:

Product Type:	Primary Antibodies
Applications:	WB
Recommended Dilution:	WB: 1/500-1/2000
Reactivity:	Human
Host:	Rabbit
Isotype:	IgG
Clonality:	Polyclonal
Immunogen:	A synthesized peptide derived from human Monocarboxylic acid transporter 1
Formulation:	Rabbit IgG in phosphate buffered saline , pH 7.4, 150mM NaCl, 0.02% sodium azide and 50% glycerol.
Concentration:	lot specific
Purification:	Affinity Chromatography
Conjugation:	Unconjugated
Storage:	Store at 4°C short term. Aliquot and store at -20°C long term. Avoid freeze/thaw cycles.
Stability:	1 year
Predicted Protein Size:	54kDa
Gene Name:	solute carrier family 16 member 1
Database Link:	<a href="#">Entrez Gene 6566 Human P53985</a>
Background:	Proton-linked monocarboxylate transporter. Catalyzes the rapid transport across the plasma membrane of many monocarboxylates such as lactate, pyruvate, branched-chain oxo acids derived from leucine, valine and isoleucine, and the ketone bodies acetoacetate, beta-hydroxybutyrate and acetate.
Synonyms:	FLJ36745; HHF7; MCT; MCT1; MGC44475



[View online »](#)

## Product images:



Western blot analysis of Monocarboxylic acid transporter 1 in Jurkat lysates using Monocarboxylic Acid Transporter 1 antibody.