

Product datasheet for **TA385248**

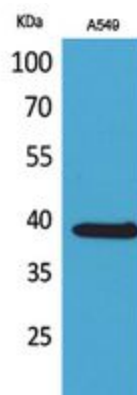
SLC10A1 Rabbit Polyclonal Antibody

Product data:

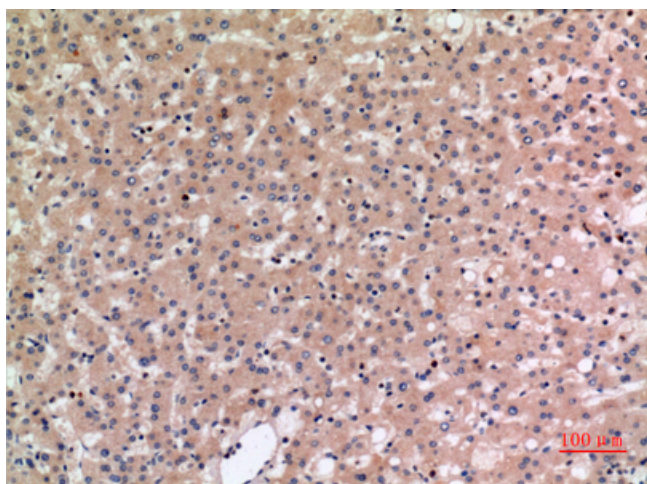
| | |
|-------------------------|--|
| Product Type: | Primary Antibodies |
| Applications: | ELISA, IHC, WB |
| Recommended Dilution: | WB: 1/500-1/2000 IHC-p: 1/100-1/300 ELISA: 1/20000 |
| Reactivity: | Human |
| Host: | Rabbit |
| Isotype: | IgG |
| Clonality: | Polyclonal |
| Immunogen: | The antiserum was produced against synthesized peptide derived from the C-terminal region of human SLC10A1. AA range:281-330 |
| Formulation: | Liquid in PBS containing 50% glycerol, 0.5% BSA and 0.02% sodium azide, pH 7.3. |
| Concentration: | lot specific |
| Purification: | Affinity Purified |
| Conjugation: | Unconjugated |
| Storage: | Store at 4°C short term. Aliquot and store at -20°C long term. Avoid freeze/thaw cycles. |
| Stability: | 1 year |
| Predicted Protein Size: | Observed MW (kDa):38 |
| Database Link: | Q14973 |
| Background: | Swiss-Prot Acc.Q14973. |



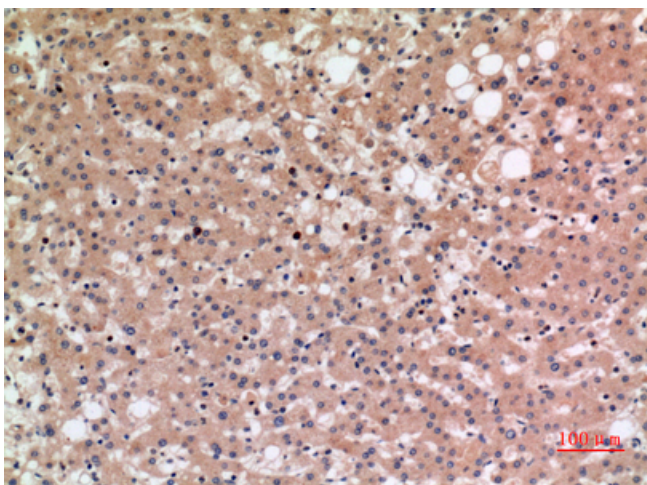
[View online »](#)

Product images:

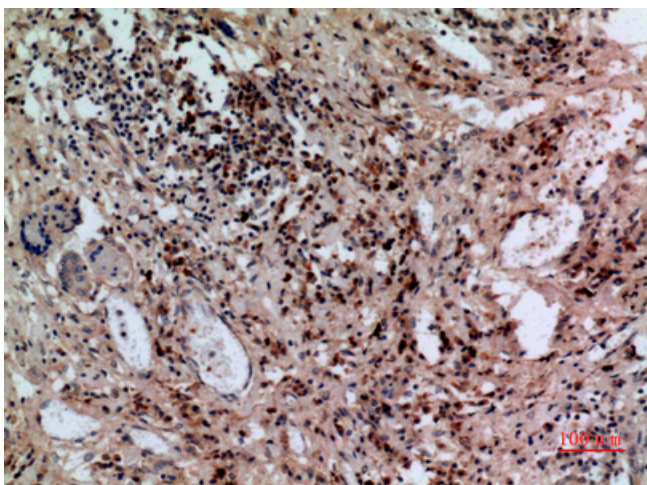
Western blot analysis of SLC10A1 in A549 lysates using SLC10A1 antibody.



Immunohistochemistry analysis of paraffin-embedded Human liver using SLC10A1 antibody. High-pressure and temperature Sodium Citrate pH 6.0 was used for antigen retrieval.



Immunohistochemistry analysis of paraffin-embedded Human liver using SLC10A1 antibody. High-pressure and temperature Sodium Citrate pH 6.0 was used for antigen retrieval.



Immunohistochemistry analysis of paraffin-embedded Human lung using SLC10A1 antibody. High-pressure and temperature Sodium Citrate pH 6.0 was used for antigen retrieval.