

Product datasheet for **TA385244**

SIRT1 Rabbit Polyclonal Antibody

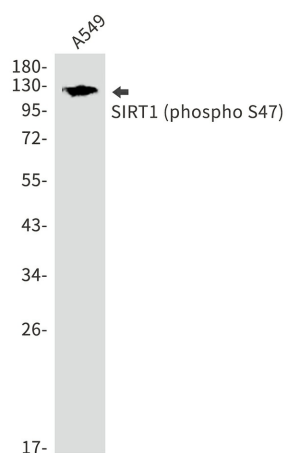
Product data:

Product Type:	Primary Antibodies
Applications:	IF, IHC, WB
Recommended Dilution:	WB: 1/1000 IHC: 1/50 ICC/IF: 1/50
Reactivity:	Human
Host:	Rabbit
Isotype:	IgG
Clonality:	Polyclonal
Immunogen:	A synthetic phosphopeptide corresponding to residues surrounding Ser47 of human SIRT1 (Phosphorylated)
Formulation:	50mM Tris-Glycine(pH 7.4), 0.15M NaCl, 40% Glycerol, 0.01% Sodium azide and 0.05% BSA
Concentration:	lot specific
Purification:	Affinity Purified
Conjugation:	Unconjugated
Storage:	Store at 4°C short term. Aliquot and store at -20°C long term. Avoid freeze/thaw cycles.
Stability:	1 year
Predicted Protein Size:	Calculated MW: 82 kDa; Observed MW: 120 kDa
Gene Name:	sirtuin 1
Database Link:	Entrez Gene 23411 Human Q96EB6
Background:	Swiss-Prot Acc.Q96EB6.
Synonyms:	hSIR2; hSIRT1; SIR2alpha; SIR2L1



[View online »](#)

Product images:



Western blot analysis of Phospho-SIRT1(Ser47) in A549 lysates using Phospho-SIRT1 (Ser47) antibody.