

Product datasheet for **TA385242**

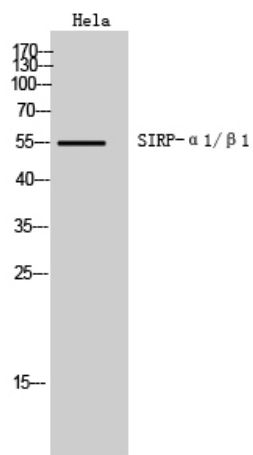
SIRP alpha (SIRPA) Rabbit Polyclonal Antibody

Product data:

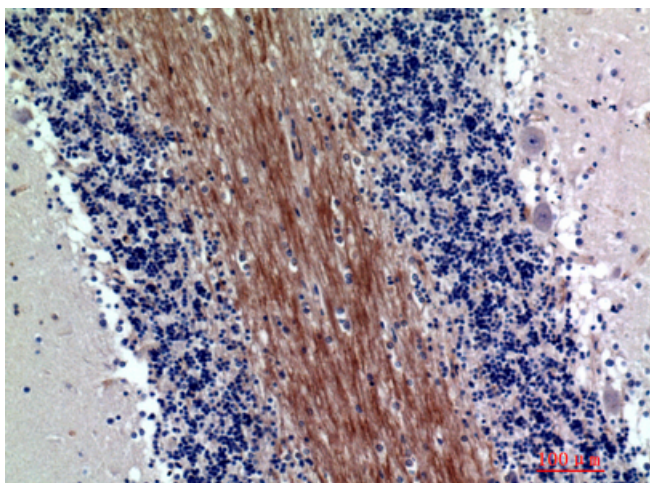
Product Type:	Primary Antibodies
Applications:	ELISA, IHC, WB
Recommended Dilution:	WB: 1/500-1/2000 IHC-p: 1/100-1/300 ELISA: 1/10000
Reactivity:	Human
Host:	Rabbit
Isotype:	IgG
Clonality:	Polyclonal
Immunogen:	The antiserum was produced against synthesized peptide derived from the Internal region of human SIRPA/SIRPB1. AA range:281-330
Formulation:	Liquid in PBS containing 50% glycerol, 0.5% BSA and 0.02% sodium azide, pH 7.3.
Concentration:	lot specific
Purification:	Affinity Purified
Conjugation:	Unconjugated
Storage:	Store at 4°C short term. Aliquot and store at -20°C long term. Avoid freeze/thaw cycles.
Stability:	1 year
Predicted Protein Size:	Observed MW (kDa):55
Gene Name:	signal regulatory protein alpha
Database Link:	Entrez Gene 140885 Human P78324
Background:	Swiss-Prot Acc.P78324/Q5TFQ8.
Synonyms:	BIT; CD172A; MFR; MYD-1; MYD1; p84; PTPNS1; SHPS-1; SHPS1; SIRP; SIRP-ALPHA-1; Sirp-alpha-2; Sirp-alpha-3; SIRPalph; SIRPalph2



[View online »](#)

Product images:

Western blot analysis of SIRP alpha/beta in HeLa lysates using SIRP alpha/beta antibody.



Immunohistochemistry analysis of paraffin-embedded Human brain using SIRP alpha/beta antibody. High-pressure and temperature Sodium Citrate pH 6.0 was used for antigen retrieval.