

Product datasheet for **TA385241**

SIRP alpha (SIRPA) Rabbit Polyclonal Antibody

Product data:

Product Type:	Primary Antibodies
Applications:	ELISA, IHC, WB
Recommended Dilution:	WB: 1/500-1/2000 IHC: 1/100-1/300 ELISA: 1/20000
Reactivity:	Human, Mouse, Rat
Host:	Rabbit
Isotype:	IgG
Clonality:	Polyclonal
Immunogen:	The antiserum was produced against synthesized peptide derived from human Sirp alpha1. AA range:451-500
Formulation:	Liquid in PBS containing 50% glycerol, 0.5% BSA and 0.02% sodium azide, pH 7.3.
Concentration:	lot specific
Purification:	Affinity Chromatography
Conjugation:	Unconjugated
Storage:	Store at 4°C short term. Aliquot and store at -20°C long term. Avoid freeze/thaw cycles.
Stability:	1 year
Predicted Protein Size:	Observed MW (kDa):55
Gene Name:	signal regulatory protein alpha
Database Link:	Entrez Gene 140885 Human P78324

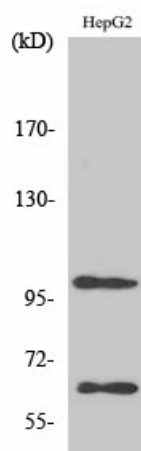
[View online »](#)

Background:

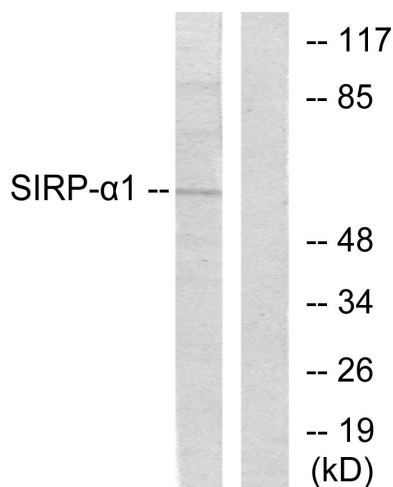
Swiss-Prot Acc.P78324.Immunoglobulin-like cell surface receptor for CD47. Acts as docking protein and induces translocation of PTPN6, PTPN11 and other binding partners from the cytosol to the plasma membrane. Supports adhesion of cerebellar neurons, neurite outgrowth and glial cell attachment. May play a key role in intracellular signaling during synaptogenesis and in synaptic function . Involved in the negative regulation of receptor tyrosine kinase-coupled cellular responses induced by cell adhesion, growth factors or insulin. Mediates negative regulation of phagocytosis, mast cell activation and dendritic cell activation. CD47 binding prevents maturation of immature dendritic cells and inhibits cytokine production by mature dendritic cells.

Synonyms:

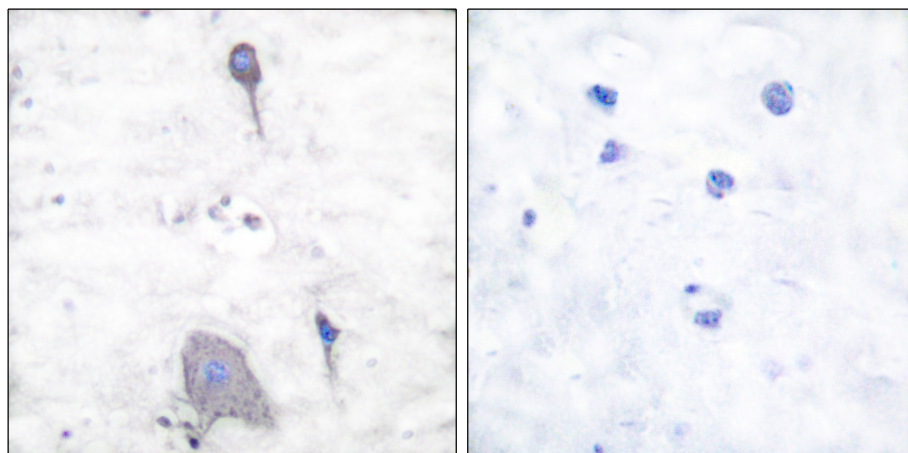
BIT; CD172A; MFR; MYD-1; MYD1; p84; PTPNS1; SHPS-1; SHPS1; SIRP; SIRP-ALPHA-1; Sirp-alpha-2; Sirp-alpha-3; SIRPalpa; SIRPalpa2

Product images:


Western blot analysis of SIRP alpha in various lysates using SIRP alpha antibody.



Western blot analysis of SIRP alpha in HepG2 lysates using Sirp alpha1 antibody. The lane on the right is blocked with the synthesized peptide.



Immunohistochemistry analysis of paraffin-embedded Human brain tissue, using Sirp alpha1 antibody. High-pressure and temperature Sodium Citrate pH 6.0 was used for antigen retrieval. Sample with blocking peptide on the right.