

## Product datasheet for **TA385237**

### SGSM1 Rabbit Monoclonal Antibody [Clone ID: R07-5H6]

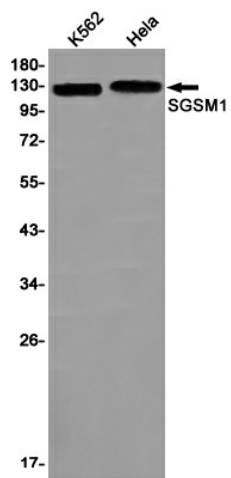
#### Product data:

Product Type:	Primary Antibodies
Clone Name:	R07-5H6
Applications:	IF, WB
Recommended Dilution:	WB: 1/1000 ICC/IF: 1/20-1/100
Reactivity:	Human
Host:	Rabbit
Isotype:	IgG
Clonality:	Monoclonal
Immunogen:	A synthetic peptide of human SGSM1
Formulation:	50mM Tris-Glycine(pH 7.4), 0.15M NaCl, 40% Glycerol, 0.01% Sodium azide and 0.05% BSA
Concentration:	lot specific
Purification:	Affinity Purified
Conjugation:	Unconjugated
Storage:	Store at 4°C short term. Aliquot and store at -20°C long term. Avoid freeze/thaw cycles.
Stability:	1 year
Predicted Protein Size:	Calculated MW: 130 kDa; Observed MW: 130 kDa
Gene Name:	small G protein signaling modulator 1
Database Link:	<a href="#">Entrez Gene 129049 Human Q2NKQ1</a>
Background:	Swiss-Prot Acc.Q2NKQ1.Interacts with numerous Rab family members, functioning as Rab effector for some, and as GTPase activator for others. Promotes GTP hydrolysis by RAB34 and RAB36. Probably functions as GTPase effector with RAB9A and RAB9B; does not stimulate GTP hydrolysis with RAB9A and RAB9B.
Synonyms:	KIAA1941; MGC133298; RUTBC2

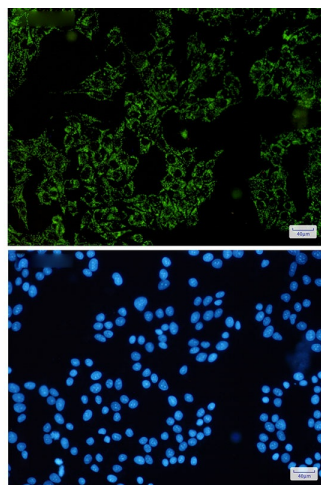


[View online »](#)

## Product images:



Western blot analysis of SGSM1 in K562, HeLa lysates using SGSM1 antibody.



Immunocytochemistry analysis of SGSM1 (green) in HeLa using SGSM1 antibody, and DAPI (blue)