

## Product datasheet for **TA385235**

### SFRP4 Rabbit Monoclonal Antibody [Clone ID: R01-2C2]

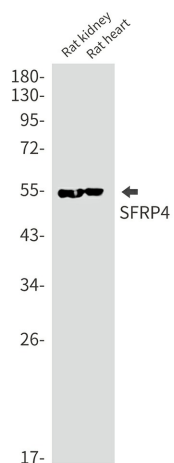
#### Product data:

Product Type:	Primary Antibodies
Clone Name:	R01-2C2
Applications:	WB
Recommended Dilution:	WB: 1/1000-1/5000
Reactivity:	Human, Mouse, Rat
Host:	Rabbit
Isotype:	IgG
Clonality:	Monoclonal
Immunogen:	A synthetic peptide of human SFRP4
Formulation:	50mM Tris-Glycine(pH 7.4), 0.15M NaCl, 40% Glycerol, 0.01% Sodium azide and 0.05% BSA
Concentration:	lot specific
Purification:	Affinity Purified
Conjugation:	Unconjugated
Storage:	Store at 4°C short term. Aliquot and store at -20°C long term. Avoid freeze/thaw cycles.
Stability:	1 year
Predicted Protein Size:	Calculated MW: 40 kDa; Observed MW: 53-55 kDa
Gene Name:	secreted frizzled related protein 4
Database Link:	<a href="#">Entrez Gene 6424 Human Q6FHJ7</a>
Background:	Swiss-Prot Acc.Q6FHJ7.Soluble frizzled-related proteins (sFRPS) function as modulators of Wnt signaling through direct interaction with Wnts. They have a role in regulating cell growth and differentiation in specific cell types . SFRP4 plays a role in bone morphogenesis. May also act as a regulator of adult uterine morphology and function. May also increase apoptosis during ovulation possibly through modulation of FZ1/FZ4/WNT4 signaling . Has phosphaturic effects by specifically inhibiting sodium-dependent phosphate uptake (PubMed:12952927).
Synonyms:	FRP-4; FRPHE; MGC26498; sFRP-4

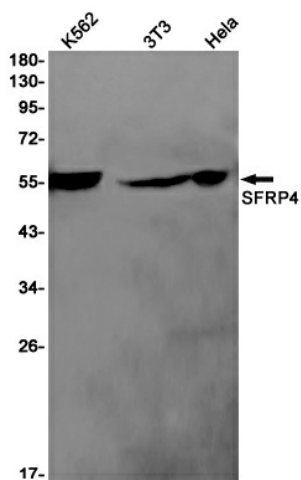


[View online »](#)

Product images:



Western blot analysis of SFRP4 in rat kidney, rat heart lysates using SFRP4 antibody.



Western blot analysis of SFRP4 in K562, 3T3, HeLa lysates using SFRP4 antibody.