

Product datasheet for **TA385233**

SFPQ Rabbit Polyclonal Antibody

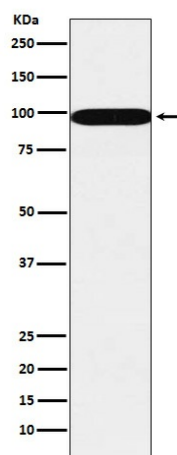
Product data:

| | |
|-------------------------|--|
| Product Type: | Primary Antibodies |
| Applications: | IF, IHC, WB |
| Recommended Dilution: | WB: 1/1000-1/5000 IHC: 1/50-1/200 ICC/IF: 1/50-1/200 |
| Reactivity: | Human, Mouse, Rat |
| Host: | Rabbit |
| Isotype: | IgG |
| Clonality: | Polyclonal |
| Immunogen: | A synthesized peptide derived from human SFPQ |
| Formulation: | Rabbit IgG in phosphate buffered saline , pH 7.4, 150mM NaCl, 0.02% sodium azide and 50% glycerol. |
| Concentration: | lot specific |
| Purification: | Affinity Chromatography |
| Conjugation: | Unconjugated |
| Storage: | Store at 4°C short term. Aliquot and store at -20°C long term. Avoid freeze/thaw cycles. |
| Stability: | 1 year |
| Predicted Protein Size: | 100kDa |
| Gene Name: | splicing factor proline/glutamine-rich |
| Database Link: | Entrez Gene 6421 Human P23246 |
| Background: | Swiss-Prot Acc.P23246.DNA- and RNA binding protein, involved in several nuclear processes. Essential pre-mRNA splicing factor required early in spliceosome formation and for splicing catalytic step II, probably as a heteromer with NONO. Binds to pre-mRNA in spliceosome C complex, and specifically binds to intronic polypyrimidine tracts. |
| Synonyms: | hPOMp100; POMP100; PSF |



[View online »](#)

Product images:



Western blot analysis of SFPQ in A431 lysates using SFPQ antibody.