

Product datasheet for **TA385232M**

SF3B3 Rabbit Monoclonal Antibody [Clone ID: R07-2K8]

Product data:

Product Type:	Primary Antibodies
Clone Name:	R07-2K8
Applications:	IF, WB
Recommended Dilution:	WB: 1/1000 ICC/IF: 1/50
Reactivity:	Human, Mouse, Rat
Host:	Rabbit
Isotype:	IgG
Clonality:	Monoclonal
Immunogen:	A synthetic peptide of human SF3B3
Formulation:	50mM Tris-Glycine(pH 7.4), 0.15M NaCl, 40% Glycerol, 0.01% Sodium azide and 0.05% BSA
Concentration:	lot specific
Purification:	Affinity Purified
Conjugation:	Unconjugated
Storage:	Store at 4°C short term. Aliquot and store at -20°C long term. Avoid freeze/thaw cycles.
Stability:	1 year
Predicted Protein Size:	Calculated MW: 136 kDa; Observed MW: 136 kDa
Gene Name:	splicing factor 3b subunit 3
Database Link:	Entrez Gene 23450 Human Q15393

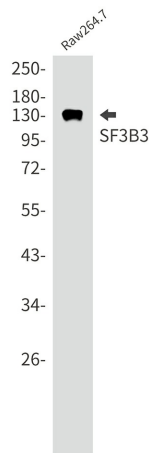
[View online »](#)

Background:

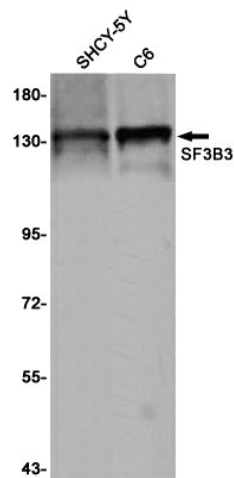
Swiss-Prot Acc.Q15393. Involved in pre-mRNA splicing as a component of the splicing factor SF3B complex, a constituent of the spliceosome (PubMed:10490618, PubMed:10882114, PubMed:27720643, PubMed:28781166). SF3B complex is required for 'A' complex assembly formed by the stable binding of U2 snRNP to the branchpoint sequence (BPS) in pre-mRNA. Sequence independent binding of SF3A/SF3B complex upstream of the branch site is essential, it may anchor U2 snRNP to the pre-mRNA (PubMed:12234937). May also be involved in the assembly of the 'E' complex (PubMed:10882114). Belongs also to the minor U12-dependent spliceosome, which is involved in the splicing of rare class of nuclear pre-mRNA intron (PubMed:15146077).

Synonyms:

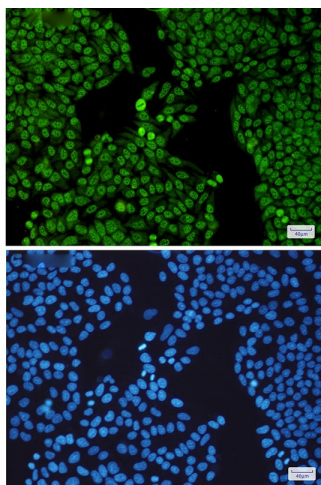
KIAA0017; RSE1; SAP130; SF3b130; STAF130

Product images:


Western blot analysis of SF3B3 in Raw264.7 lysates using SF3B3 antibody.



Western blot analysis of SF3B3 in SH-SY5Y, C6 lysates using SF3B3 antibody.



Immunocytochemistry analysis of SF3B3(green) in HeLa using SF3B3 antibody, and DAPI(blue)