

## Product datasheet for **TA385231M**

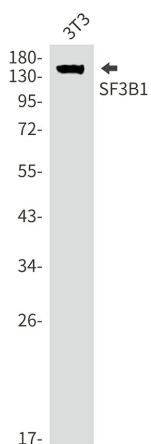
### **SAP155 (SF3B1) Rabbit Monoclonal Antibody [Clone ID: R08-6I2]**

#### **Product data:**

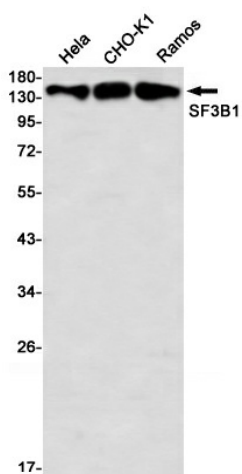
Product Type:	Primary Antibodies
Clone Name:	R08-6I2
Applications:	IF, IHC, WB
Recommended Dilution:	WB: 1/1000 IHC: 1/50 ICC/IF: 1/50
Reactivity:	Human, Mouse, Hamster, Rat
Host:	Rabbit
Isotype:	IgG
Clonality:	Monoclonal
Immunogen:	A synthetic peptide of human SF3B1
Formulation:	50mM Tris-Glycine(pH 7.4), 0.15M NaCl, 40% Glycerol, 0.01% Sodium azide and 0.05% BSA
Concentration:	lot specific
Purification:	Affinity Purified
Conjugation:	Unconjugated
Storage:	Store at 4°C short term. Aliquot and store at -20°C long term. Avoid freeze/thaw cycles.
Stability:	1 year
Predicted Protein Size:	Calculated MW:146 kDa,Observed MW:155 kDa
Gene Name:	splicing factor 3b subunit 1
Database Link:	<a href="#">Entrez Gene 23451 Human</a> <a href="#">O75533</a>
Synonyms:	PRP10; PRPF10; SAP155; SF3b155

[View online »](#)

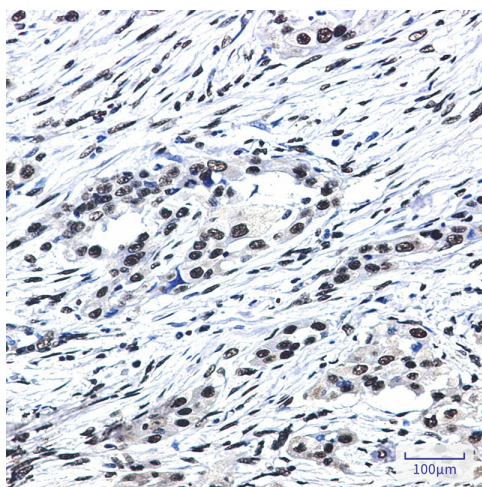
## Product images:



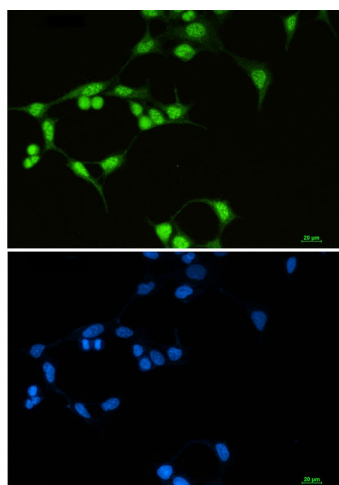
Western blot analysis of SF3B1 in 3T3 lysates using SF3B1 antibody.



Western blot analysis of SF3B1 in HeLa, CHO-K1, C6, Ramos lysates using SF3B1 antibody



Immunohistochemistry analysis of paraffin-embedded Human lung cancer using SF3B1 antibody. High-pressure and temperature Sodium Citrate pH 6.0 was used for antigen retrieval.



Immunocytochemistry analysis of SF3B1 (green) in 293T using SF3B1 antibody, and DAPI (blue).