

## Product datasheet for **TA385230S**

### SET Rabbit Monoclonal Antibody [Clone ID: R04-5E8]

#### Product data:

Product Type:	Primary Antibodies
Clone Name:	R04-5E8
Applications:	IF, IHC, IP, WB
Recommended Dilution:	WB: 1/2000-1/10000 IHC: 1/50 ICC/IF: 1/200 IP: 1/20
Reactivity:	Human
Host:	Rabbit
Isotype:	IgG
Clonality:	Monoclonal
Immunogen:	A synthetic peptide of human SET
Formulation:	50mM Tris-Glycine(pH 7.4), 0.15M NaCl, 40% Glycerol, 0.01% Sodium azide and 0.05% BSA
Concentration:	lot specific
Purification:	Affinity Purified
Conjugation:	Unconjugated
Storage:	Store at 4°C short term. Aliquot and store at -20°C long term. Avoid freeze/thaw cycles.
Stability:	1 year
Predicted Protein Size:	Calculated MW: 34 kDa; Observed MW: 39 kDa
Gene Name:	SET nuclear proto-oncogene
Database Link:	<a href="#">Entrez Gene 6418 Human Q01105</a>



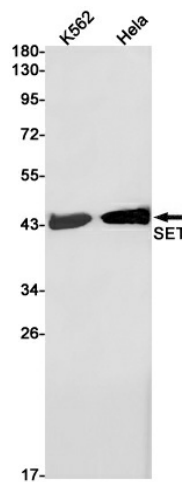
[View online »](#)

**Background:**

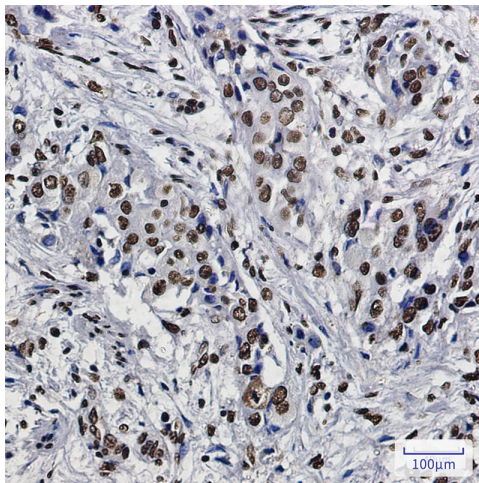
Swiss-Prot Acc.Q01105. Multitasking protein, involved in apoptosis, transcription, nucleosome assembly and histone chaperoning. Isoform 2 anti-apoptotic activity is mediated by inhibition of the GZMA-activated DNase, NME1. In the course of cytotoxic T-lymphocyte (CTL)-induced apoptosis, GZMA cleaves SET, disrupting its binding to NME1 and releasing NME1 inhibition. Isoform 1 and isoform 2 are potent inhibitors of protein phosphatase 2A. Isoform 1 and isoform 2 inhibit EP300/CREBBP and PCAF-mediated acetylation of histones (HAT) and nucleosomes, most probably by masking the accessibility of lysines of histones to the acetylases. The predominant target for inhibition is histone H4. HAT inhibition leads to silencing of HAT-dependent transcription and prevents active demethylation of DNA. Both isoforms stimulate DNA replication of the adenovirus genome complexed with viral core proteins; however, isoform 2 specific activity is higher.

**Synonyms:**

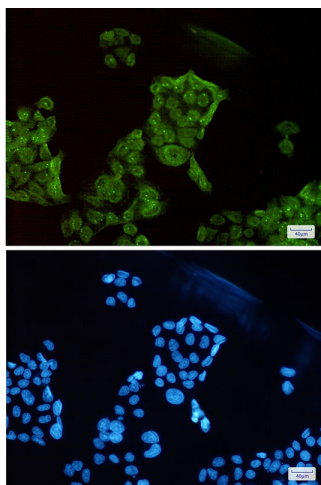
2PP2A; I-2PP2A; I2PP2A; IGAAD; IPP2A2; PHAPII; TAF-I; TAF-IBETA

**Product images:**

Western blot analysis of SET in K562, HeLa lysates using SET antibody.



Immunohistochemistry analysis of paraffin-embedded Human lung cancer using SET antibody. High-pressure and temperature Sodium Citrate pH 6.0 was used for antigen retrieval.



Immunocytochemistry analysis of SET(green) in HeLa using SET antibody, and DAPI(blue)