

## Product datasheet for **TA385229**

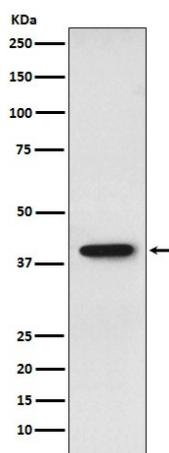
### SET Rabbit Polyclonal Antibody

#### Product data:

Product Type:	Primary Antibodies
Applications:	FC, IF, IHC, IP, WB
Recommended Dilution:	WB: 1/1000-1/5000 IHC: 1/50-1/200 ICC/IF: 1/100-1/500 IP: 1/30 FC: 1/20
Reactivity:	Human, Mouse, Rat
Host:	Rabbit
Isotype:	IgG
Clonality:	Polyclonal
Immunogen:	A synthesized peptide derived from human SET
Formulation:	Rabbit IgG in phosphate buffered saline , pH 7.4, 150mM NaCl, 0.02% sodium azide and 50% glycerol.
Concentration:	lot specific
Purification:	Affinity Chromatography
Conjugation:	Unconjugated
Storage:	Store at 4°C short term. Aliquot and store at -20°C long term. Avoid freeze/thaw cycles.
Stability:	1 year
Predicted Protein Size:	39kDa
Gene Name:	SET nuclear proto-oncogene
Database Link:	<a href="#">Entrez Gene 6418 Human Q01105</a>
Background:	Swiss-Prot Acc.Q01105.Multitasking protein, involved in apoptosis, transcription, nucleosome assembly and histone binding. Isoform 2 anti-apoptotic activity is mediated by inhibition of the GZMA-activated DNase, NME1.
Synonyms:	2PP2A; I-2PP2A; I2PP2A; IGAAD; IPP2A2; PHAPII; TAF-I; TAF-IBETA



[View online »](#)

**Product images:**

Western blot analysis of SET in HepG2 lysates using SET antibody.