

## Product datasheet for **TA385226M**

### SENP1 Rabbit Polyclonal Antibody

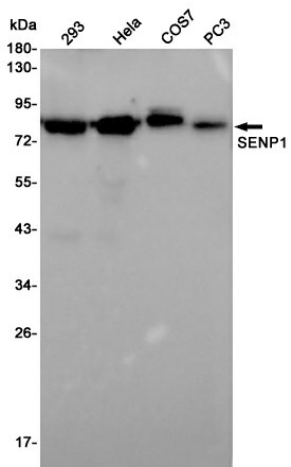
#### Product data:

Product Type:	Primary Antibodies
Applications:	FC, IF, IHC, WB
Recommended Dilution:	WB: 1/1000-1/5000 IHC: 1/20-1/100 ICC/IF: 1/20-1/100 FC: 1/20
Reactivity:	Human
Host:	Rabbit
Isotype:	IgG
Clonality:	Polyclonal
Immunogen:	A synthetic peptide of human SENP1
Formulation:	50mM Tris-Glycine(pH 7.4), 0.15M NaCl, 40% Glycerol, 0.01% Sodium azide and 0.05% BSA
Concentration:	lot specific
Purification:	Affinity Purified
Conjugation:	Unconjugated
Storage:	Store at 4°C short term. Aliquot and store at -20°C long term. Avoid freeze/thaw cycles.
Stability:	1 year
Predicted Protein Size:	Calculated MW: 74 kDa; Observed MW: 76 kDa
Gene Name:	SUMO1/sentrin specific peptidase 1
Database Link:	<a href="#">Entrez Gene 29843 Human Q9P0U3</a>
Background:	Swiss-Prot Acc.Q9P0U3.
Synonyms:	SuPr-2

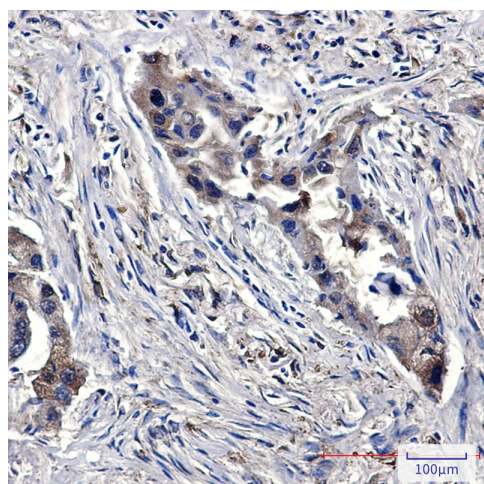


[View online »](#)

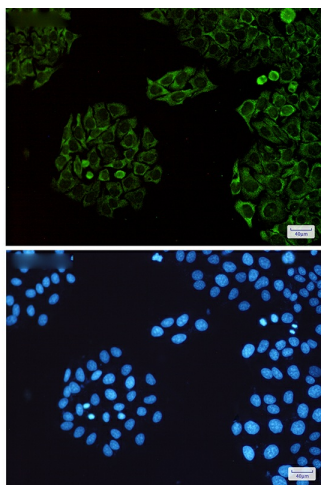
## Product images:



Western blot analysis of SENP1 in 293, HeLa, COS7, PC-3 lysates using SENP1 antibody.



Immunohistochemistry analysis of paraffin-embedded Human lung cancer using SENP1 antibody. High-pressure and temperature Sodium Citrate pH 6.0 was used for antigen retrieval.



Immunocytochemistry analysis of SEN1(green)  
in HeLa using SEN1 antibody, and DAPI(blue)