

Product datasheet for **TA385223**

CD62L (SELL) Rabbit Polyclonal Antibody

Product data:

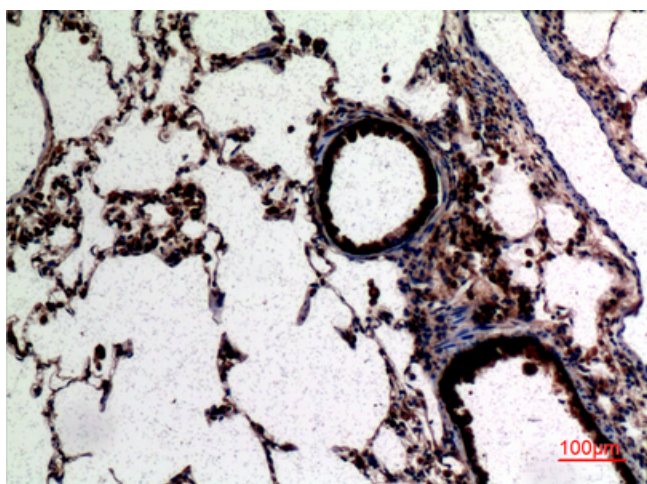
Product Type:	Primary Antibodies
Applications:	ELISA, IHC, WB
Recommended Dilution:	WB: 1/500-1/2000 IHC-p: 1/100-300 ELISA: 1/20000
Reactivity:	Human, Mouse, Rat
Host:	Rabbit
Isotype:	IgG
Clonality:	Polyclonal
Immunogen:	Synthesized peptide derived from L-Selectin . at AA range: 60-140
Formulation:	Liquid in PBS containing 50% glycerol, 0.5% BSA and 0.02% sodium azide, pH 7.3.
Concentration:	lot specific
Purification:	Affinity Purified
Conjugation:	Unconjugated
Storage:	Store at 4°C short term. Aliquot and store at -20°C long term. Avoid freeze/thaw cycles.
Stability:	1 year
Predicted Protein Size:	Observed MW (kDa):42
Gene Name:	selectin L
Database Link:	Entrez Gene 6402 Human P14151
Background:	Swiss-Prot Acc.P14151.
Synonyms:	CD62L; gp90-MEL; hLHRc; LAM-1; LAM1; LECAM1; Leu-8; LEU8; LNHR; LSEL; Lyam-1; LYAM1; PLNHR; TQ1



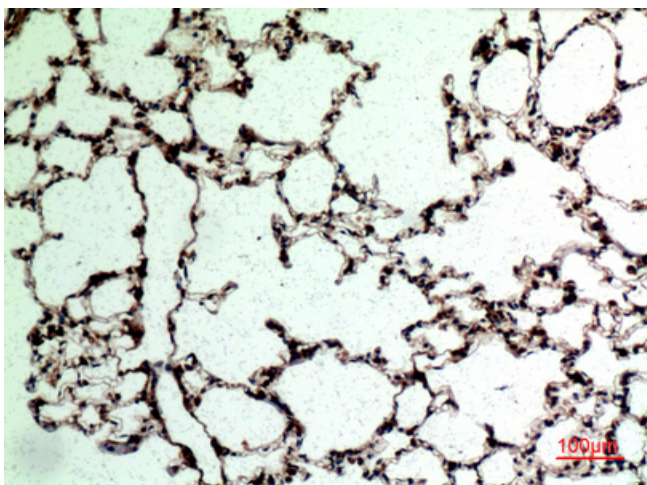
[View online »](#)

Product images:

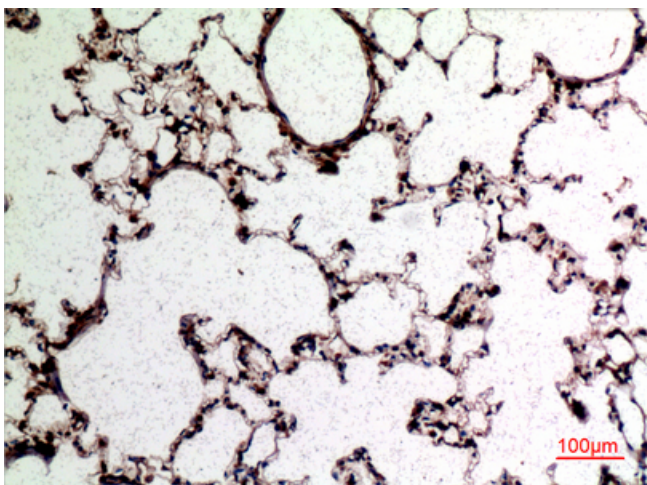
Western blot analysis of CD62L in K562 lysates using CD62L antibody.



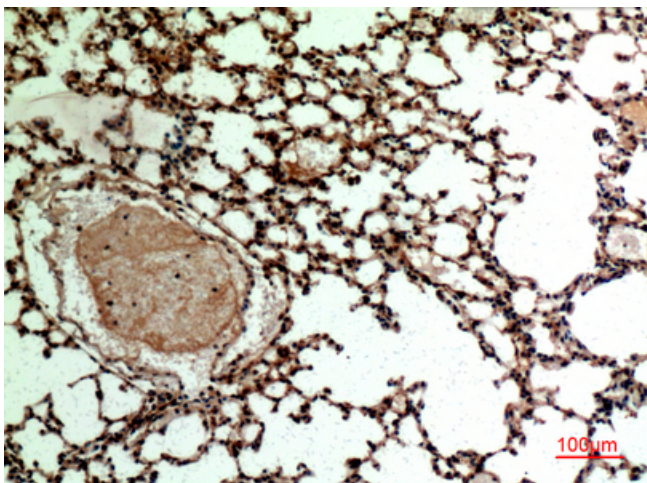
Immunohistochemistry analysis of paraffin-embedded rat lung using CD62L antibody. High-pressure and temperature Sodium Citrate pH 6.0 was used for antigen retrieval.



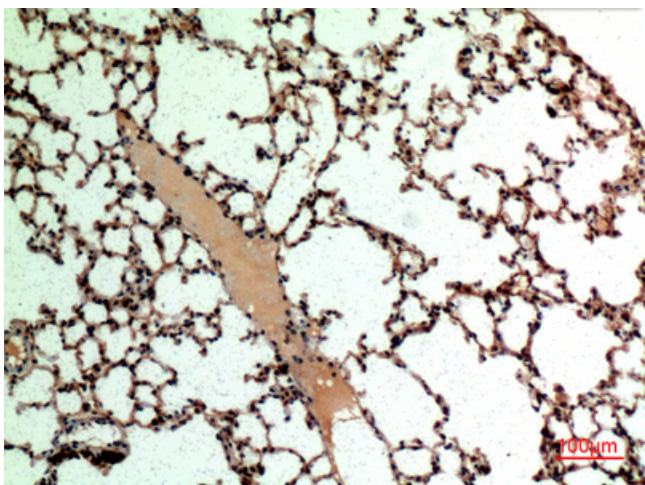
Immunohistochemistry analysis of paraffin-embedded rat lung using CD62L antibody. High-pressure and temperature Sodium Citrate pH 6.0 was used for antigen retrieval.



Immunohistochemistry analysis of paraffin-embedded rat lung using CD62L antibody. High-pressure and temperature Sodium Citrate pH 6.0 was used for antigen retrieval.



Immunohistochemistry analysis of paraffin-embedded mouse lung using CD62L antibody. High-pressure and temperature Sodium Citrate pH 6.0 was used for antigen retrieval.



Immunohistochemistry analysis of paraffin-embedded mouse lung using CD62L antibody. High-pressure and temperature Sodium Citrate pH 6.0 was used for antigen retrieval.