

## Product datasheet for **TA385222**

### Selenof Rabbit Monoclonal Antibody [Clone ID: R04-4D8]

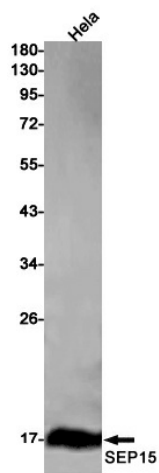
#### Product data:

Product Type:	Primary Antibodies
Clone Name:	R04-4D8
Applications:	WB
Recommended Dilution:	WB: 1/1000-1/2000
Reactivity:	Human
Host:	Rabbit
Isotype:	IgG
Clonality:	Monoclonal
Immunogen:	A synthetic peptide of mouse SEP15
Formulation:	50mM Tris-Glycine(pH 7.4), 0.15M NaCl, 40% Glycerol, 0.01% Sodium azide and 0.05% BSA
Concentration:	lot specific
Purification:	Affinity Purified
Conjugation:	Unconjugated
Storage:	Store at 4°C short term. Aliquot and store at -20°C long term. Avoid freeze/thaw cycles.
Stability:	1 year
Predicted Protein Size:	Calculated MW: 18 kDa; Observed MW: 18 kDa
Gene Name:	selenoprotein 15
Database Link:	<a href="#">Q9ERR7</a>
Background:	Swiss-Prot Acc.Q9ERR7.May be involved in redox reactions associated with the formation of disulfide bonds. May contribute to the quality control of protein folding in the endoplasmic reticulum .
Synonyms:	SEP15



[View online »](#)

## Product images:



Western blot analysis of 44089 in HeLa lysates using SEP15 antibody.