

## Product datasheet for **TA385221S**

### SEC61A2 Rabbit Monoclonal Antibody [Clone ID: R07-6B6]

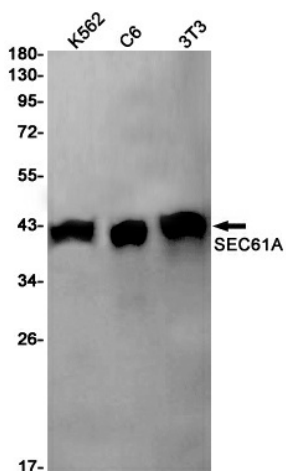
#### Product data:

Product Type:	Primary Antibodies
Clone Name:	R07-6B6
Applications:	IF, IHC, IP, WB
Recommended Dilution:	WB: 1/1000-1/5000 IHC: 1/20-1/50 ICC/IF: 1/50 IP: 1/20
Reactivity:	Human, Mouse, Rat
Host:	Rabbit
Isotype:	IgG
Clonality:	Monoclonal
Immunogen:	Recombinant protein of human SEC61A
Formulation:	50mM Tris-Glycine(pH 7.4), 0.15M NaCl, 40% Glycerol, 0.01% Sodium azide and 0.05% BSA
Concentration:	lot specific
Purification:	Affinity Purified
Conjugation:	Unconjugated
Storage:	Store at 4°C short term. Aliquot and store at -20°C long term. Avoid freeze/thaw cycles.
Stability:	1 year
Predicted Protein Size:	Calculated MW: 52 kDa; Observed MW: 40 kDa
Gene Name:	Sec61 translocon alpha 2 subunit
Database Link:	<a href="#">Entrez Gene 55176 Human Q9H9S3</a>
Background:	Swiss-Prot Acc.Q9H9S3. Appears to play a crucial role in the insertion of secretory and membrane polypeptides into the ER. It is required for assembly of membrane and secretory proteins. Found to be tightly associated with membrane-bound ribosomes, either directly or through adaptor proteins .
Synonyms:	FLJ10578

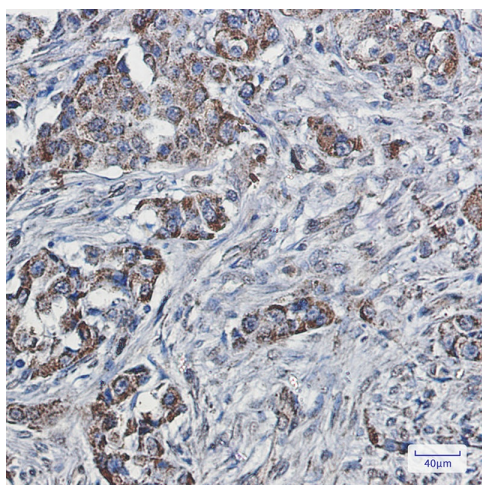


[View online »](#)

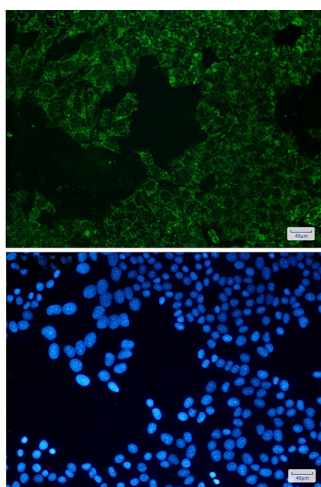
## Product images:



Western blot analysis of SEC61A in K562, C6, 3T3 lysates using SEC61A antibody.



Immunohistochemistry analysis of paraffin-embedded Human lung cancer using SEC61A antibody. High-pressure and temperature Sodium Citrate pH 6.0 was used for antigen retrieval.



Immunocytochemistry analysis of SEC61A(green) in HeLa using SEC61A antibody, and DAPI(blue)