

## Product datasheet for **TA385220S**

### SDHA Rabbit Monoclonal Antibody [Clone ID: R09-5K6]

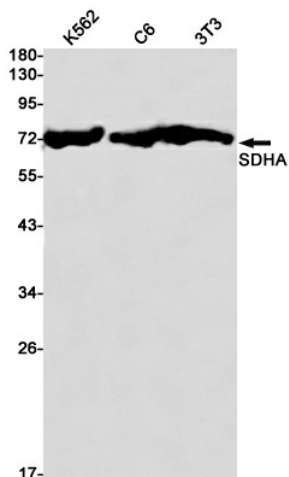
#### Product data:

Product Type:	Primary Antibodies
Clone Name:	R09-5K6
Applications:	IF, IHC, IP, WB
Recommended Dilution:	WB: 1/1000 IHC: 1/20-1/100 ICC/IF: 1/50 IP: 1/20
Reactivity:	Human, Mouse, Rat
Host:	Rabbit
Isotype:	IgG
Clonality:	Monoclonal
Immunogen:	A synthetic peptide of human SDHA
Formulation:	50mM Tris-Glycine(pH 7.4), 0.15M NaCl, 40% Glycerol, 0.01% Sodium azide and 0.05% BSA
Concentration:	lot specific
Purification:	Affinity Purified
Conjugation:	Unconjugated
Storage:	Store at 4°C short term. Aliquot and store at -20°C long term. Avoid freeze/thaw cycles.
Stability:	1 year
Predicted Protein Size:	Calculated MW: 73 kDa; Observed MW: 73 kDa
Gene Name:	succinate dehydrogenase complex flavoprotein subunit A
Database Link:	<a href="#">Entrez Gene 6389 Human P31040</a>
Background:	Swiss-Prot Acc.P31040.Flavoprotein (FP) subunit of succinate dehydrogenase (SDH) that is involved in complex II of the mitochondrial electron transport chain and is responsible for transferring electrons from succinate to ubiquinone (coenzyme Q) (PubMed:24781757). Can act as a tumor suppressor (PubMed:20484225).
Synonyms:	FP; SDH1; SDH2; SDHF

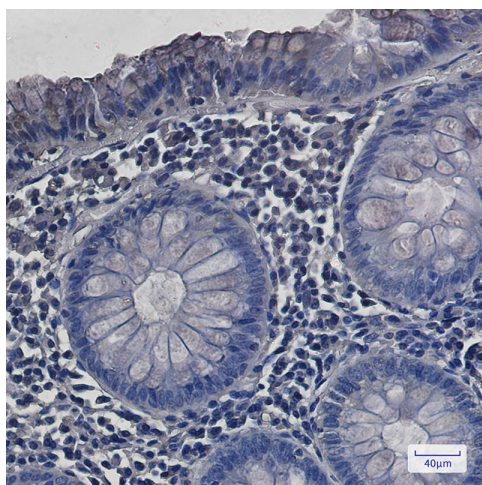


[View online »](#)

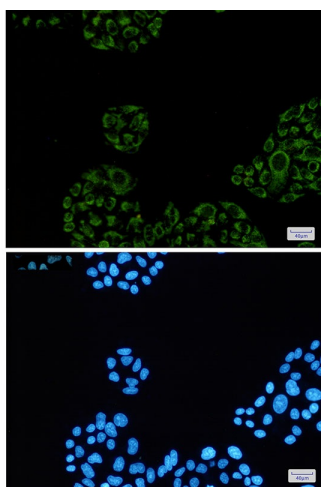
## Product images:



Western blot analysis of SDHA in K562, C6, 3T3 lysates using SDHA antibody.



Immunohistochemistry analysis of paraffin-embedded Human colon cancer using SDHA antibody. High-pressure and temperature Sodium Citrate pH 6.0 was used for antigen retrieval.



Immunocytochemistry analysis of SDHA(green) in HeLa using SDHA antibody, and DAPI(blue)