

Product datasheet for **TA385219**

SDHA Rabbit Polyclonal Antibody

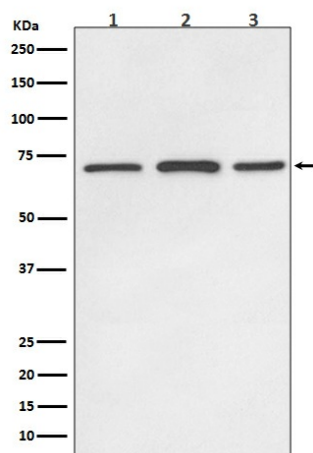
Product data:

| | |
|-------------------------|---|
| Product Type: | Primary Antibodies |
| Applications: | FC, IF, IHC, IP, WB |
| Recommended Dilution: | WB: 1/500-1/2000 IHC: 1/50-1/200 ICC/IF: 1/50-1/200 IP: 1/20 FC: 1/20 |
| Reactivity: | Human, Mouse, Rat |
| Host: | Rabbit |
| Isotype: | IgG |
| Clonality: | Polyclonal |
| Immunogen: | A synthesized peptide derived from human SDHA |
| Formulation: | Rabbit IgG in phosphate buffered saline , pH 7.4, 150mM NaCl, 0.02% sodium azide and 50% glycerol. |
| Concentration: | lot specific |
| Purification: | Affinity Chromatography |
| Conjugation: | Unconjugated |
| Storage: | Store at 4°C short term. Aliquot and store at -20°C long term. Avoid freeze/thaw cycles. |
| Stability: | 1 year |
| Predicted Protein Size: | 72kDa |
| Gene Name: | succinate dehydrogenase complex flavoprotein subunit A |
| Database Link: | Entrez Gene 6389 Human P31040 |
| Background: | Swiss-Prot Acc.P31040.Flavoprotein (FP) subunit of succinate dehydrogenase (SDH) that is involved in complex II of the mitochondrial electron transport chain and is responsible for transferring electrons from succinate to ubiquinone. |
| Synonyms: | FP; SDH1; SDH2; SDHF |



[View online »](#)

Product images:



Western blot analysis of SDHA in (1) HeLa lysates; (2) mouse brain lysates; (3) rat brain lysates; using SDHA antibody.