

## Product datasheet for **TA385215**

### SCIN Rabbit Monoclonal Antibody [Clone ID: R07-6G2]

#### Product data:

Product Type:	Primary Antibodies
Clone Name:	R07-6G2
Applications:	IHC, WB
Recommended Dilution:	WB: 1/1000 IHC: 1/50
Reactivity:	Human
Host:	Rabbit
Isotype:	IgG
Clonality:	Monoclonal
Immunogen:	A synthetic peptide of human SCIN
Formulation:	50mM Tris-Glycine(pH 7.4), 0.15M NaCl, 40% Glycerol, 0.01% Sodium azide and 0.05% BSA
Concentration:	lot specific
Purification:	Affinity Purified
Conjugation:	Unconjugated
Storage:	Store at 4°C short term. Aliquot and store at -20°C long term. Avoid freeze/thaw cycles.
Stability:	1 year
Predicted Protein Size:	Calculated MW: 80 kDa; Observed MW: 80 kDa
Gene Name:	scinderin
Database Link:	<a href="#">Entrez Gene 85477 Human</a> <a href="#">Q9Y6U3</a>



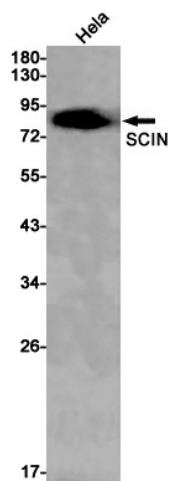
[View online »](#)

**Background:**

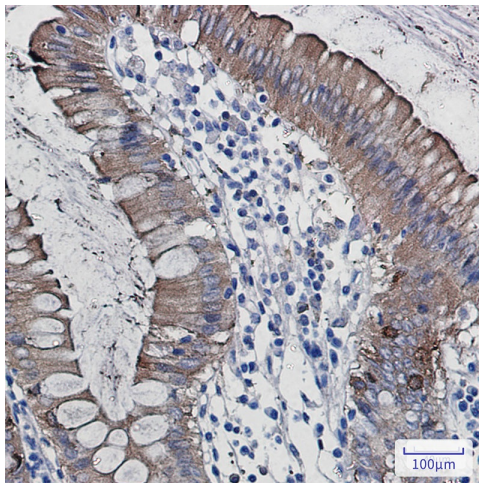
Swiss-Prot Acc.Q9Y6U3.Ca<sup>2+</sup>-dependent actin filament-severing protein that has a regulatory function in exocytosis by affecting the organization of the microfilament network underneath the plasma membrane (PubMed:8547642, PubMed:26365202). Severing activity is inhibited by phosphatidylinositol 4,5-bis-phosphate (PIP<sub>2</sub>). In vitro, also has barbed end capping and nucleating activities in the presence of Ca<sup>2+</sup>. Required for megakaryocyte differentiation, maturation, polyploidization and apoptosis with the release of platelet-like particles (PubMed:11568009). Plays a role in osteoclastogenesis (OCG) and actin cytoskeletal organization in osteoclasts. Regulates chondrocyte proliferation and differentiation. Inhibits cell proliferation and tumorigenesis. Signaling is mediated by MAPK, p38 and JNK pathways (PubMed:11568009).

**Synonyms:**

adseverin; KIAA1905; Scinderin

**Product images:**

Western blot analysis of SCIN in HeLa lysates using SCIN antibody.



Immunohistochemistry analysis of paraffin-embedded Human colon cancer using SCIN antibody. High-pressure and temperature Sodium Citrate pH 6.0 was used for antigen retrieval.