

Product datasheet for **TA385214**

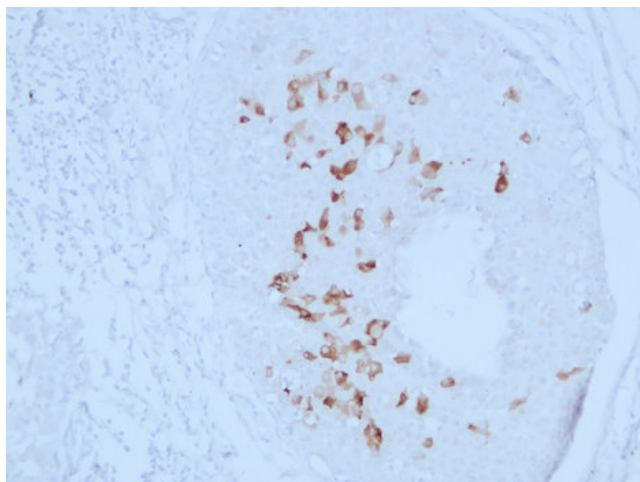
Mammaglobin A (SCGB2A2) Mouse Monoclonal Antibody [Clone ID: 2G7-6D1-2H3]

Product data:

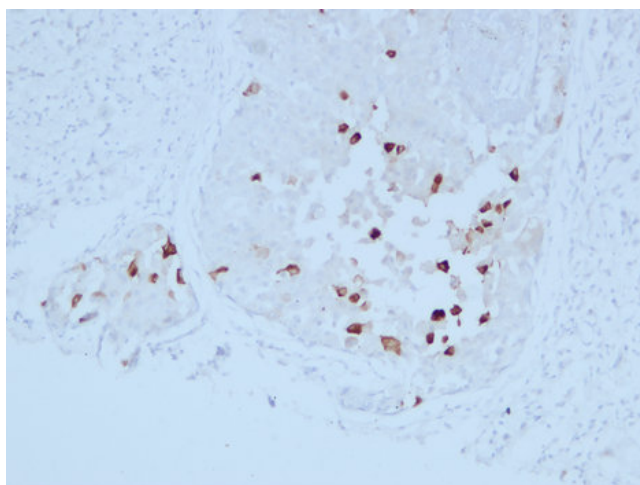
Product Type:	Primary Antibodies
Clone Name:	2G7-6D1-2H3
Applications:	IHC
Recommended Dilution:	IHC-p: 1/100-1/500
Reactivity:	Human
Host:	Mouse
Isotype:	IgG2a, kappa
Clonality:	Monoclonal
Immunogen:	Synthesized peptide derived from human Mammaglobin
Formulation:	Liquid in PBS containing 50% glycerol, 0.5% BSA and 0.02% sodium azide, pH 7.3.
Concentration:	lot specific
Purification:	Affinity Chromatography
Conjugation:	Unconjugated
Storage:	Store at 4°C short term. Aliquot and store at -20°C long term. Avoid freeze/thaw cycles.
Stability:	1 year
Gene Name:	secretoglobin family 2A member 2
Database Link:	Entrez Gene 4250 Human Q13296
Synonyms:	Mammaglobin-1; MGB1; MGC71974; UGB2



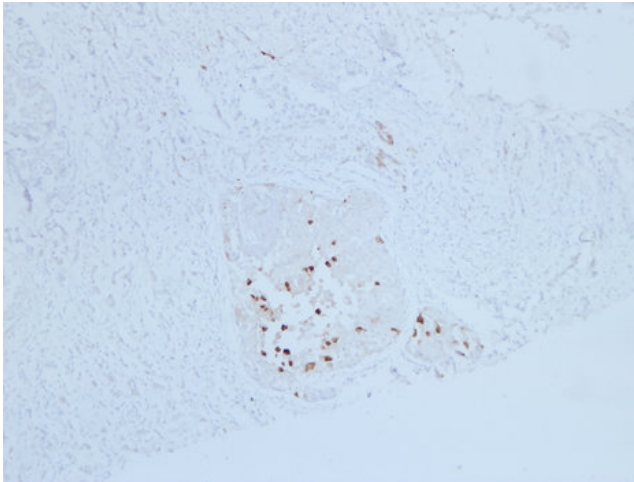
[View online »](#)

Product images:

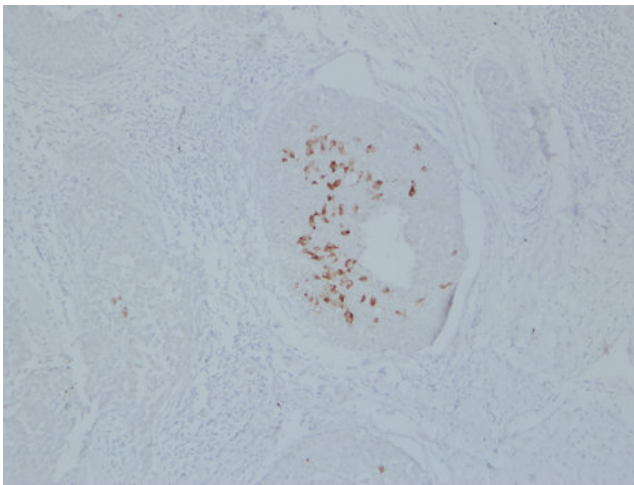
Immunohistochemical analysis of paraffin-embedded Breast carcinoma. 1, Antibody was diluted at 1:200(4°,overnight). 2, TRIS-EDTA of pH8.0 was used for antigen retrieval. 3,Secondary antibody was diluted at 1:200(room temperature, 30min).



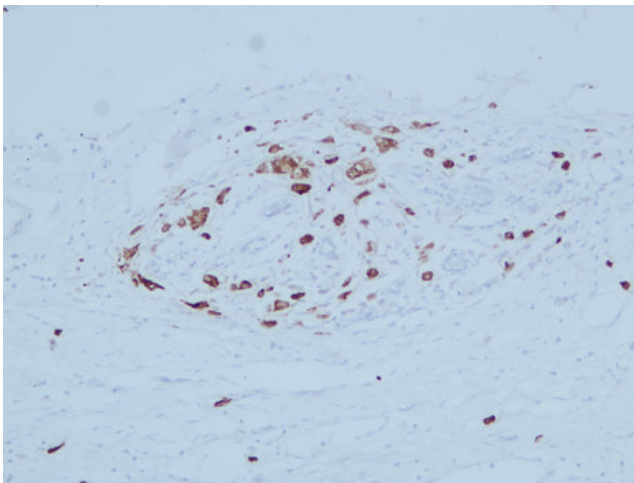
Immunohistochemical analysis of paraffin-embedded Breast carcinoma. 1, Antibody was diluted at 1:200(4°,overnight). 2, TRIS-EDTA of pH8.0 was used for antigen retrieval. 3,Secondary antibody was diluted at 1:200(room temperature, 30min).



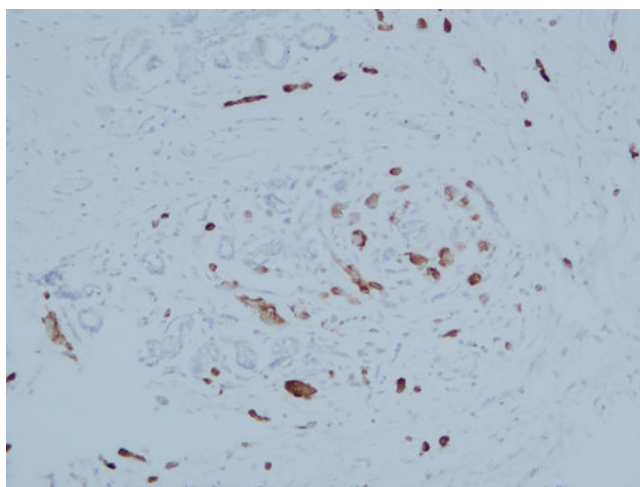
Immunohistochemical analysis of paraffin-embedded Breast carcinoma. 1, Antibody was diluted at 1:200(4°,overnight). 2, TRIS-EDTA of pH8. was used for antigen retrieval. 3,Secondary antibody was diluted at 1:200(room temperature, 30min).



Immunohistochemical analysis of paraffin-embedded Breast carcinoma. 1, Antibody was diluted at 1:200(4°,overnight). 2, TRIS-EDTA of pH8.0 was used for antigen retrieval. 3,Secondary antibody was diluted at 1:200(room temperature, 30min).



Immunohistochemical analysis of paraffin-embedded Breast carcinoma. 1, Antibody was diluted at 1:200(4°,overnight). 2, TRIS-EDTA of pH8.0 was used for antigen retrieval. 3,Secondary antibody was diluted at 1:200(room temperature, 30min).



Immunohistochemical analysis of paraffin-embedded Breast carcinoma. 1, Antibody was diluted at 1:200(4°,overnight). 2, TRIS-EDTA of pH8.0 was used for antigen retrieval. 3,Secondary antibody was diluted at 1:200(room temperature, 30min).