

## Product datasheet for **TA385212**

### SCD1 (SCD) Rabbit Monoclonal Antibody [Clone ID: R04-2K1]

#### Product data:

Product Type:	Primary Antibodies
Clone Name:	R04-2K1
Applications:	IF, IHC, IP, WB
Recommended Dilution:	WB: 1/1000 IHC: 1/200 ICC/IF: 1/20-1/100 IP: 1/20
Reactivity:	Human
Host:	Rabbit
Isotype:	IgG
Clonality:	Monoclonal
Immunogen:	Recombinant protein of human SCD1
Formulation:	50mM Tris-Glycine(pH 7.4), 0.15M NaCl, 40% Glycerol, 0.01% Sodium azide and 0.05% BSA
Concentration:	lot specific
Purification:	Affinity Purified
Conjugation:	Unconjugated
Storage:	Store at 4°C short term. Aliquot and store at -20°C long term. Avoid freeze/thaw cycles.
Stability:	1 year
Predicted Protein Size:	Calculated MW: 42 kDa; Observed MW: 37 kDa
Gene Name:	stearoyl-CoA desaturase
Database Link:	<a href="#">Entrez Gene 6319 Human 000767</a>



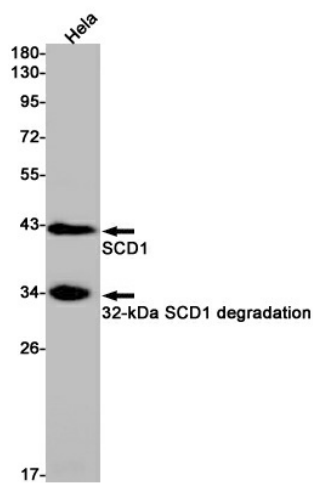
[View online »](#)

**Background:**

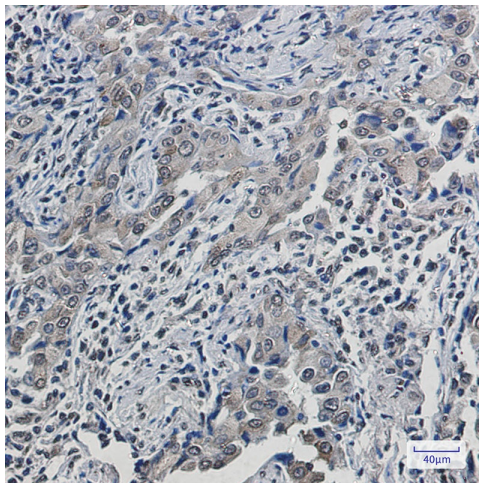
Swiss-Prot Acc.O00767.Stearyl-CoA desaturase that utilizes O<sub>2</sub> and electrons from reduced cytochrome b<sub>5</sub> to introduce the first double bond into saturated fatty acyl-CoA substrates (PubMed:15907797, PubMed:18765284). Catalyzes the insertion of a cis double bond at the delta-9 position into fatty acyl-CoA substrates including palmitoyl-CoA and stearoyl-CoA (PubMed:15907797, PubMed:18765284). Gives rise to a mixture of 16:1 and 18:1 unsaturated fatty acids (PubMed:15610069). Plays an important role in lipid biosynthesis. Plays an important role in regulating the expression of genes that are involved in lipogenesis and in regulating mitochondrial fatty acid oxidation . Plays an important role in body energy homeostasis . Contributes to the biosynthesis of membrane phospholipids, cholesterol esters and triglycerides .

**Synonyms:**

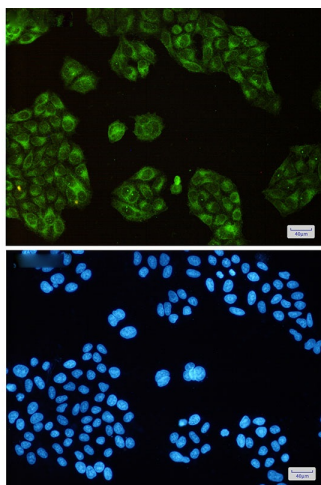
Delta(9)-desaturase; delta-9-desaturase; FADS5; MSTP008; SCD1; SCDOS

**Product images:**

Western blot analysis of SCD1 in HeLa lysates using SCD1 antibody.



Immunohistochemistry analysis of paraffin-embedded Human lung cancer using SCD1 antibody. High-pressure and temperature Sodium Citrate pH 6.0 was used for antigen retrieval.



Immunocytochemistry analysis of SCD1 (green) in HeLa using SCD1 antibody, and DAPI (blue)