

Product datasheet for **TA385211S**

SCARB1 Rabbit Monoclonal Antibody [Clone ID: R07-4H3]

Product data:

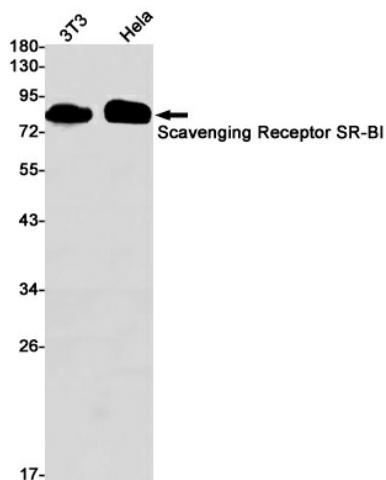
| | |
|-------------------------|---|
| Product Type: | Primary Antibodies |
| Clone Name: | R07-4H3 |
| Applications: | IP, WB |
| Recommended Dilution: | WB: 1/1000 IP: 1/20 |
| Reactivity: | Human, Mouse |
| Host: | Rabbit |
| Isotype: | IgG |
| Clonality: | Monoclonal |
| Immunogen: | Recombinant protein of human Scavenging Receptor SR-BI |
| Formulation: | 50mM Tris-Glycine(pH 7.4), 0.15M NaCl, 40% Glycerol, 0.01% Sodium azide and 0.05% BSA |
| Concentration: | lot specific |
| Purification: | Affinity Purified |
| Conjugation: | Unconjugated |
| Storage: | Store at 4°C short term. Aliquot and store at -20°C long term. Avoid freeze/thaw cycles. |
| Stability: | 1 year |
| Predicted Protein Size: | Calculated MW: 61 kDa; Observed MW: 80 kDa |
| Gene Name: | scavenger receptor class B member 1 |
| Database Link: | Entrez Gene 949 Human Q8WTV0 |
| Background: | Swiss-Prot Acc.Q8WTV0.Receptor for different ligands such as phospholipids, cholesterol ester, lipoproteins, phosphatidylserine and apoptotic cells (PubMed:12016218, PubMed:12519372, PubMed:21226579). Receptor for HDL, mediating selective uptake of cholesteryl ether and HDL-dependent cholesterol efflux (PubMed:26965621). Also facilitates the flux of free and esterified cholesterol between the cell surface and apoB-containing lipoproteins and modified lipoproteins, although less efficiently than HDL. May be involved in the phagocytosis of apoptotic cells, via its phosphatidylserine binding activity (PubMed:12016218). |



[View online »](#)

Synonyms: CD36L1; CLA-1; CLA1; MGC138242; SR-BI; SRB1

Product images:



Western blot analysis of Scavenging Receptor SRBI in 3T3, HeLa lysates using SCARB1 antibody.