

Product datasheet for **TA385211M**

SCARB1 Rabbit Monoclonal Antibody [Clone ID: R07-4H3]

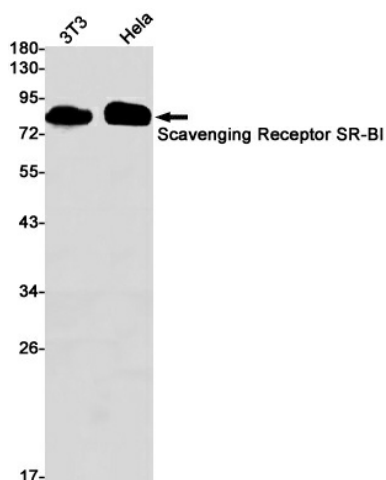
Product data:

Product Type:	Primary Antibodies
Clone Name:	R07-4H3
Applications:	IP, WB
Recommended Dilution:	WB: 1/1000 IP: 1/20
Reactivity:	Human, Mouse
Host:	Rabbit
Isotype:	IgG
Clonality:	Monoclonal
Immunogen:	Recombinant protein of human Scavenging Receptor SR-BI
Formulation:	50mM Tris-Glycine(pH 7.4), 0.15M NaCl, 40% Glycerol, 0.01% Sodium azide and 0.05% BSA
Concentration:	lot specific
Purification:	Affinity Purified
Conjugation:	Unconjugated
Storage:	Store at 4°C short term. Aliquot and store at -20°C long term. Avoid freeze/thaw cycles.
Stability:	1 year
Predicted Protein Size:	Calculated MW: 61 kDa; Observed MW: 80 kDa
Gene Name:	scavenger receptor class B member 1
Database Link:	Entrez Gene 949 Human Q8WTV0
Background:	Swiss-Prot Acc.Q8WTV0.Receptor for different ligands such as phospholipids, cholesterol ester, lipoproteins, phosphatidylserine and apoptotic cells (PubMed:12016218, PubMed:12519372, PubMed:21226579). Receptor for HDL, mediating selective uptake of cholesteryl ether and HDL-dependent cholesterol efflux (PubMed:26965621). Also facilitates the flux of free and esterified cholesterol between the cell surface and apoB-containing lipoproteins and modified lipoproteins, although less efficiently than HDL. May be involved in the phagocytosis of apoptotic cells, via its phosphatidylserine binding activity (PubMed:12016218).

[View online »](#)

Synonyms: CD36L1; CLA-1; CLA1; MGC138242; SR-BI; SRB1

Product images:



Western blot analysis of Scavenging Receptor SRBI in 3T3, HeLa lysates using SCARB1 antibody.