

Product datasheet for **TA385210**

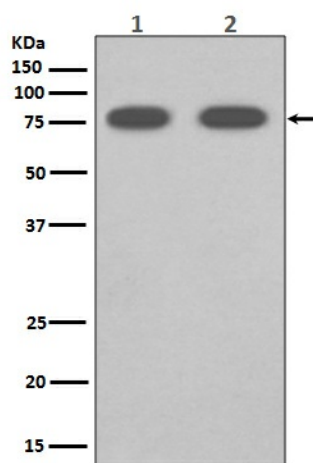
SCARB1 Rabbit Polyclonal Antibody

Product data:

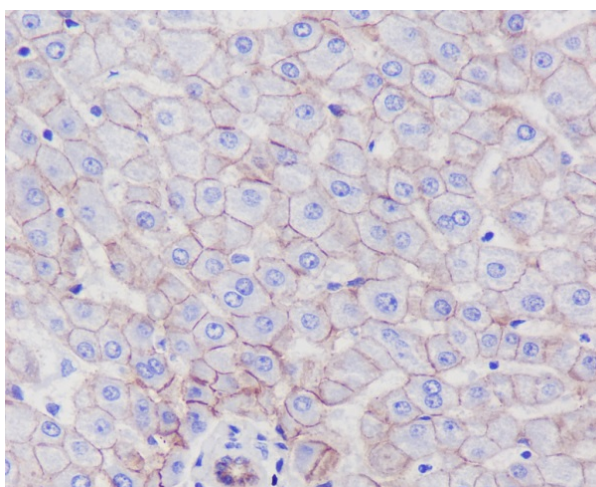
Product Type:	Primary Antibodies
Applications:	FC, IF, IHC, WB
Recommended Dilution:	WB: 1/500-1/2000 IHC: 1/50-1/200
Reactivity:	Human, Mouse, Rat
Host:	Rabbit
Isotype:	IgG
Clonality:	Polyclonal
Immunogen:	A synthesized peptide derived from human Scavenging Receptor SR-BI
Formulation:	Rabbit IgG in phosphate buffered saline , pH 7.4, 150mM NaCl, 0.02% sodium azide and 50% glycerol.
Concentration:	lot specific
Purification:	Affinity Chromatography
Conjugation:	Unconjugated
Storage:	Store at 4°C short term. Aliquot and store at -20°C long term. Avoid freeze/thaw cycles.
Stability:	1 year
Predicted Protein Size:	80kDa
Gene Name:	scavenger receptor class B member 1
Database Link:	Entrez Gene 949 Human Q8WTV0
Background:	Swiss-Prot Acc.Q8WTV0.Receptor for different ligands such as phospholipids, cholesterol ester, lipoproteins, phosphatidylserine and apoptotic cells. Probable receptor for HDL, located in particular region of the plasma membrane, called caveolae. Facilitates the flux of free and esterified cholesterol between the cell surface and extracellular donors and acceptors, such as HDL and to a lesser extent, apoB-containing lipoproteins and modified lipoproteins.
Synonyms:	CD36L1; CLA-1; CLA1; MGC138242; SR-BI; SRB1



[View online »](#)

Product images:

Western blot analysis of SCARB1 in (1) Human fetal liver lysates; (2) mouse liver lysates using SCARB1 antibody.



Immunohistochemistry analysis of paraffin-embedded Human liver using SCARB1 antibody. High-pressure and temperature Sodium Citrate pH 6.0 was used for antigen retrieval.