

## Product datasheet for **TA385209**

### SCAI Rabbit Monoclonal Antibody [Clone ID: R05-3J2]

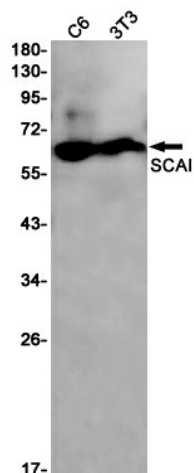
#### Product data:

Product Type:	Primary Antibodies
Clone Name:	R05-3J2
Applications:	IF, IHC, WB
Recommended Dilution:	WB: 1/1000 IHC: 1/20 ICC/IF: 1/20
Reactivity:	Human, Mouse, Rat
Host:	Rabbit
Isotype:	IgG
Clonality:	Monoclonal
Immunogen:	A synthetic peptide of human SCAI
Formulation:	50mM Tris-Glycine(pH 7.4), 0.15M NaCl, 40% Glycerol, 0.01% Sodium azide and 0.05% BSA
Concentration:	lot specific
Purification:	Affinity Purified
Conjugation:	Unconjugated
Storage:	Store at 4°C short term. Aliquot and store at -20°C long term. Avoid freeze/thaw cycles.
Stability:	1 year
Predicted Protein Size:	Calculated MW: 70 kDa; Observed MW: 60 kDa
Gene Name:	suppressor of cancer cell invasion
Database Link:	<a href="#">Entrez Gene 286205 Human Q8N9R8</a>
Background:	Swiss-Prot Acc.Q8N9R8.Tumor suppressor which functions to suppress MRTFA-induced SRF transcriptional activity. May function in the RHOA-DIAPH1 signal transduction pathway and regulate cell migration through transcriptional regulation of ITGB1.
Synonyms:	9330112M16; A930041I02Rik; AI662729; RP23-322M5.1

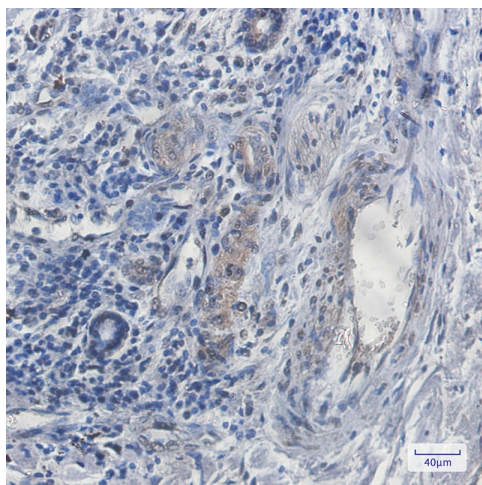


[View online »](#)

## Product images:



Western blot analysis of SCAI in C6, 3T3 lysates using SCAI antibody.



Immunohistochemistry analysis of paraffin-embedded Human lung cancer using SCAI antibody. High-pressure and temperature Sodium Citrate pH 6.0 was used for antigen retrieval.